

QUALITY
DURABILITY
TRADITION

WIRE & CABLE TERMINATION

There With YouSM
faster • safer • easier

“They’re doing it right.
Everybody uses Greenlee.”

JOE SCHROEDER
Apprentice Electrician



From battery to ratchet, if it needs to be cut or crimped, Greenlee's got the tool.

- A Greenlee exclusive—the Gator-Plus™ battery-powered 4-ton crimping tool brings tons of power in a small easy to use package
- Greenlee now offers the EK210 terminal Gator-Plus™ crimping tool—a unique battery-powered tool to crimp terminals featuring a design that reduces repetitive motion injuries
- High Performance Ratchet Cable Cutter—advanced features with automatic opening and two-speed advance
- Greenlee's own CCX easy changeover reduces the number of tools that need to be carried to the job, allowing you to cut, strip or crimp with a flip open head



**EK210 Gator-Plus™
Terminal Crimping
Tool**



**774 High
Performance
Ratchet Cable
Cutter**

What Is CCX?

The Greenlee CCX three-step, 10-second function changeover.

The easy, quick-release design makes changeovers this simple:



- 1 Just push the release buttons, and the blades slide right out of the easy-opening CCX head.



- 2 Alternate die adapters, cutter blades, or knockout punch adapters slide right in!



- 3 You're working again, with no lost time!

CCX-Exclusive Multipurpose Tools from Greenlee

Get more for your money and carry fewer tools – with CCX. This advanced line of multipurpose tools is designed to work with a wide variety of cutting blades and crimping die adapters, and a knockout punch adapter. Buy just one tool for countless electrical construction and maintenance jobs.

Cut

- Copper, aluminum, copperweld, and ACSR cable
- Guy strand, including EHS
- Threaded rod
- DIN rail

Crimp – with any six-ton die type

- Greenlee K22 & KA22
- Burndy W
- Kearney O
- Thomas & Betts 6Ton
- Blackburn OD
- Panduit CD2001
- For copper lugs and splices, use Greenlee dies up to 600 kcmil (MCM). For aluminum lugs & splices, use Greenlee dies up to 350 kcmil (MCM).*

Punch – use the knockout punch adapter with

- Standard Slug-Buster and Slug-Splitter punches
- Non-round punches

*UL classified and CSA certified to 600 kcmil (MCM) with Anderson, Blackburn®, Burndy, ILSCO, Panduit, Thomas & Betts, and Penn-Union copper color-coded connectors. UL & CUL classified to 350 kcmil (MCM) with Anderson, Blackburn®, Burndy, ILSCO, Panduit, Thomas & Betts, and Penn-Union aluminum color-coded connectors.

Gator-Pro™ ECCX



- Nickel-metal hydride battery (Ni-MH) delivers up to 140 cycles per charge.
- 360° rotating head adjusts to your work position.
- Lightweight, plus ergonomic-angled handle for comfortable, low-stress use.
- Cycles in seconds with two-speed hydraulic pump, maximizing productivity.
- Automatic retraction when crimping and cutting cycles are complete.
- Uses all optional CCX blades and adapters (see page 145).
- Includes two batteries, a choice of either a 120V, 12V or 230V one-hour charger, and a high-impact molded carrying case.
- U.S. Patent #6,206,663 and Patent Pending.

CAT. NO.	UPC NO.	DESCRIPTION
ECCX11	07028	Battery-powered CCX tool, 120 V charger
ECCX12	07029	Battery-powered CCX tool, 12 V charger
ECCX22	07030	Battery-powered CCX tool, 230 V charger

Crimping dies on page 170.

SPECIFICATIONS

Crimping Force	12,000 lb. (53 kN)
Length	14-3/4" (375 mm)
Height	12-1/8" (308 mm)
Weight	10.5 lbs. (4.8 kg)
Battery	12 Volt, 2.2 Ah, Ni-MH
Battery Charge Time	1 hour



Gator-Pro™ CCCX Corded Tools



- Operates directly from 120 volt or 230 volt 50 Hz electrical outlets. No need to charge batteries or worry about running out of power.
- Equipped with 15 foot (5 m) cord. Can be used with extension cords.
- 360° rotating head adjusts to your work position.
- Lightweight, plus ergonomic-angled handle for comfortable, low-stress use.
- Cycles in seconds with two-speed hydraulic pump, maximizing productivity.
- Automatic retraction when crimping and cutting cycles are complete.
- Uses all optional CCX blades and adapters (see page 145).
- Includes a high-impact molded carrying case.
- U.S. Patent #6,206,663 and Patent Pending.

CAT. NO.	UPC NO.	DESCRIPTION
CCCX11	01394	Corded CCX Tool, 120 V
CCCX22	01395	Corded CCX Tool, 230 V

Crimping dies on page 170.

SPECIFICATIONS

Crimping Force	12,000 lb. (53 kN)	Height	12-1/8" (308 mm)
Length	14-3/4" (375 mm)	Weight	10.5 lbs. (4.8 kg)
Operating Voltage	120 volts, 60 cycle AC (CCCX11); 230 volts, 60 cycle AC (CCCX22)		

HCCX Hand-Powered Hydraulic Tool



- 360° rotating head – comfortable to use at any jobsite.
- Lightweight, compact size makes it easy to carry and easy to use.
- Two-speed hydraulic pump for short cycle time.
- Automatic retraction when crimping and cutting cycles are complete.
- Includes a steel carrying case with spaces for blades and adapters.
- Uses all optional CCX blades and adapters (see page 145).
- U.S. Patent #6,206,663 and Patent Pending.

CAT. NO.	UPC NO.	DESCRIPTION
HCCX	07066	Hand-hydraulic CCX tool

Crimping dies on page 170.

SPECIFICATIONS

Crimping Force	12,000 lb. (53 kN)
Length	20-3/4" (527 mm)
Weight	8 lbs. (3.6 kg)

RCCX Remote-Powered Hydraulic Tool



- Operates with standard, 10,000 psi (700 bar) hydraulic pumps.
- 3/8" male screw-type coupler, operating pressure 10,000 psi.
- Includes a steel carrying case with spaces for blades and adapters.
- Uses all optional CCX blades and adapters (see page 145).
- Patent Pending.

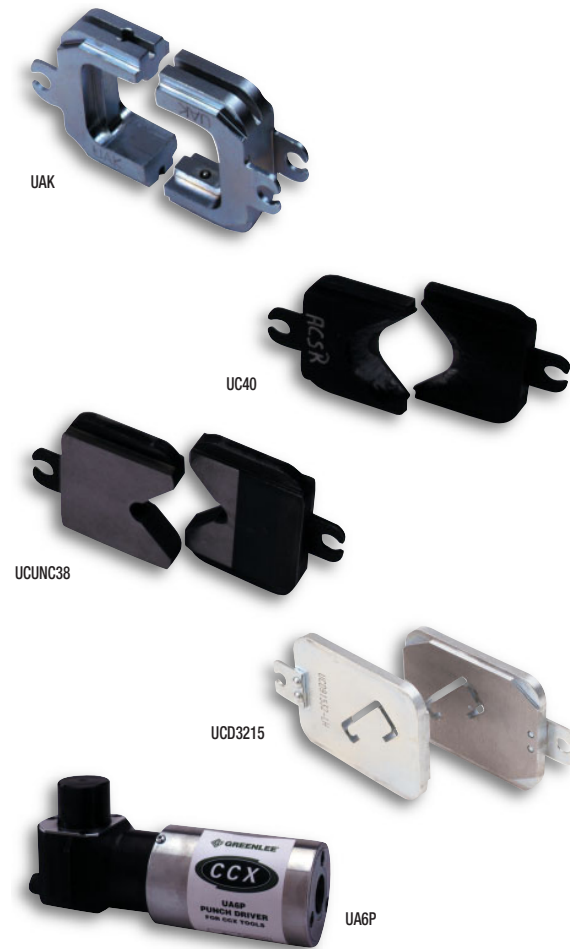
CAT. NO.	UPC NO.	DESCRIPTION
RCCX	07067	Remote-powered hydraulic CCX tool

Crimping dies on page 170.

SPECIFICATIONS

Crimping Force	12,000 lb. (53 kN)
Length	11-7/8" (302 mm)
Weight	5.2 lbs. (2.4 kg)
Hydraulic Couplers	3/8" Male screw-type
Max. Operating Pressures	10,000 psi (700 bar)

CCX Tool Accessories (optional, all in pairs except punch driver)



DIE ADAPTERS

UA22	07062	Adapter for Greenlee K22 dies
UAK	07033	Adapter for Kearney "0", T&B "6 Ton", and Blackburn "OD" dies
UAW	07035	Adapter for Burndy "W" and Panduit "CD-2001" dies (equivalent to "D ₃ " die)

CABLE CUTTING BLADES

UC26	06714	Cutter Blades AL & CU 1" capacity
UC40	07036	Cutter Blades AL & CU 1-1/2" capacity
UCACSR	07037	Cutter blades for ACSR & guy strand

THREADED ROD CUTTING BLADES

UCUNC14	07038	Cutter blades for 1/4" threaded rod
UCUNC38	07039	Cutter blades for 3/8" threaded rod
UCUNC12	07274	Cutter blades for 1/2" threaded rod
UCM5	07053	Cutter blades for M5 threaded rod
UCM6	07050	Cutter blades for M6 threaded rod
UCM8	07051	Cutter blades for M8 threaded rod
UCM10	07052	Cutter blades for M10 threaded rod

DIN RAIL CUTTING BLADES

UCD3575	07041	DIN rail cutter blades – 35 x 7.5
UCD3215	07042	DIN rail cutter blades – 32 x 15 x 9
UCD3515	07043	DIN rail cutter blades – 35 x 15
UPD6	01620	DIN Rail Punch (punches 15 mm x 6.2 mm hole in 35 x 7.5 and 35 x 15 DIN rail)

KNOCKOUT PUNCH ADAPTER

UA6P	07020	Punch Driver Adapter* (accepts 3/4" draw steel)
------	-------	-------------------------------------------------

* U.S. Patent #6, 065, 326

CCX Tool Capacities

CRIMPING	CUTTING	PUNCHING
Copper Color-Coded Lugs and Splices: 600 kcmil (MCM)	Copper and Aluminum Cable: 1-1/2" (40 mm)	Round: 2.42" (61.5 mm) in 10 ga. mild steel
Aluminum Color-Coded Lugs and Splices: 300 kcmil (MCM)	ACSR: 954 kcmil (MCM) (Cardinal)	
5/8" Service Entrance Connectors: #10-1/0	Standard Guy Strand: 5/8" (20 mm)	
.840 Service Entrance Connectors: 1/0-4/0	EHS Guy Strand: 1/2" (13 mm)	
Aluminum Overhead "H" taps: #6-4/0	Ground Rod: 1/2" (13 mm)	
One Piece ACSR Tension Splices: #4-1/0	Rebar (schedule 60): 1/2" (13 mm)	
Two Piece ACSR Tension Splices: #2-4/0	Threaded Rod: 1/4", 3/8", 1/2", 4 mm, 5 mm, 6 mm, 8 mm, 10 mm	
	DIN Rail: 35 x 7.5, 32 x 15 x 9, 35 x 15	



Cable Cutter Selection Guide

CABLE SIZE

		AWG	#8	#6	#4	#2	#1	1/0	2/0	3/0	4/0	250	300	350	400	500	600	750	1000	1500	2000	Page
		mm ²	6	10	16	25	35	40	50	70	95	kcmil 120	kcmil 150	kcmil 150	kcmil 185	kcmil 240	kcmil 300	kcmil 400	kcmil 500	kcmil 800	kcmil 1000	Page No.
BATTERY-POWERED & CORDED																						
ECCX, CCCX	Al	•	•	•	•	•	•	•	•	•	•	•	•	•	•	•	•	•	•	•	•	143,
	Cu	•	•	•	•	•	•	•	•	•	•	•	•	•	•	•	•	•	•	•	•	144
	ACSR	•	•	•	•	•	•	•	•	•	•	•	•	•	•	•	•	•	•	•	•	•
ES750	Al	•	•	•	•	•	•	•	•	•	•	•	•	•	•	•	•	•	•	•	•	147
	Cu	•	•	•	•	•	•	•	•	•	•	•	•	•	•	•	•	•	•	•	•	•
ESG50GL, CSG50GL	Al	•	•	•	•	•	•	•	•	•	•	•	•	•	•	•	•	•	•	•	•	147
	Cu	•	•	•	•	•	•	•	•	•	•	•	•	•	•	•	•	•	•	•	•	•
ESG85GL	Al	•	•	•	•	•	•	•	•	•	•	•	•	•	•	•	•	•	•	•	•	148
	Cu	•	•	•	•	•	•	•	•	•	•	•	•	•	•	•	•	•	•	•	•	•
ESG45GL,* CSG45GL*	Al	•	•	•	•	•	•	•	•	•	•	•	•	•	•	•	•	•	•	•	•	149
	Cu	•	•	•	•	•	•	•	•	•	•	•	•	•	•	•	•	•	•	•	•	•
	ACSR	•	•	•	•	•	•	•	•	•	•	•	•	•	•	•	•	•	•	•	•	•
HYDRAULIC-TYPE																						
RCCX	Al	•	•	•	•	•	•	•	•	•	•	•	•	•	•	•	•	•	•	•	•	144
	Cu	•	•	•	•	•	•	•	•	•	•	•	•	•	•	•	•	•	•	•	•	•
	ACSR	•	•	•	•	•	•	•	•	•	•	•	•	•	•	•	•	•	•	•	•	•
HCCX	Al	•	•	•	•	•	•	•	•	•	•	•	•	•	•	•	•	•	•	•	•	144
	Cu	•	•	•	•	•	•	•	•	•	•	•	•	•	•	•	•	•	•	•	•	•
	ACSR	•	•	•	•	•	•	•	•	•	•	•	•	•	•	•	•	•	•	•	•	•
HK520*	Al	•	•	•	•	•	•	•	•	•	•	•	•	•	•	•	•	•	•	•	•	150
	Cu	•	•	•	•	•	•	•	•	•	•	•	•	•	•	•	•	•	•	•	•	•
	ACSR	•	•	•	•	•	•	•	•	•	•	•	•	•	•	•	•	•	•	•	•	•
750	Al	•	•	•	•	•	•	•	•	•	•	•	•	•	•	•	•	•	•	•	•	150
	Cu	•	•	•	•	•	•	•	•	•	•	•	•	•	•	•	•	•	•	•	•	•
RATCHET-TYPE																						
759	Al	•	•	•	•	•	•	•	•	•	•	•	•	•	•	•	•	•	•	•	•	151
	Cu	•	•	•	•	•	•	•	•	•	•	•	•	•	•	•	•	•	•	•	•	•
760, 761	Al	•	•	•	•	•	•	•	•	•	•	•	•	•	•	•	•	•	•	•	•	151
	Cu	•	•	•	•	•	•	•	•	•	•	•	•	•	•	•	•	•	•	•	•	•
45206	Al	•	•	•	•	•	•	•	•	•	•	•	•	•	•	•	•	•	•	•	•	152
	Cu	•	•	•	•	•	•	•	•	•	•	•	•	•	•	•	•	•	•	•	•	•
45207	Al	•	•	•	•	•	•	•	•	•	•	•	•	•	•	•	•	•	•	•	•	152
	Cu	•	•	•	•	•	•	•	•	•	•	•	•	•	•	•	•	•	•	•	•	•
763, 773	Al	•	•	•	•	•	•	•	•	•	•	•	•	•	•	•	•	•	•	•	•	153
	Cu	•	•	•	•	•	•	•	•	•	•	•	•	•	•	•	•	•	•	•	•	•
764, 774	Al	•	•	•	•	•	•	•	•	•	•	•	•	•	•	•	•	•	•	•	•	153
	Cu	•	•	•	•	•	•	•	•	•	•	•	•	•	•	•	•	•	•	•	•	•
756	Al	•	•	•	•	•	•	•	•	•	•	•	•	•	•	•	•	•	•	•	•	153
	Cu	•	•	•	•	•	•	•	•	•	•	•	•	•	•	•	•	•	•	•	•	•
757*	ACSR	•	•	•	•	•	•	•	•	•	•	•	•	•	•	•	•	•	•	•	•	154
MANUAL																						
727	Al	•	•	•	•	•	•	•	•	•	•	•	•	•	•	•	•	•	•	•	•	156
	Cu	•	•	•	•	•	•	•	•	•	•	•	•	•	•	•	•	•	•	•	•	•
718, 718F	Al	•	•	•	•	•	•	•	•	•	•	•	•	•	•	•	•	•	•	•	•	155,
	Cu	•	•	•	•	•	•	•	•	•	•	•	•	•	•	•	•	•	•	•	•	156
704	Al	•	•	•	•	•	•	•	•	•	•	•	•	•	•	•	•	•	•	•	•	155
	Cu	•	•	•	•	•	•	•	•	•	•	•	•	•	•	•	•	•	•	•	•	•
705	Al	•	•	•	•	•	•	•	•	•	•	•	•	•	•	•	•	•	•	•	•	155
	Cu	•	•	•	•	•	•	•	•	•	•	•	•	•	•	•	•	•	•	•	•	•
706	Al	•	•	•	•	•	•	•	•	•	•	•	•	•	•	•	•	•	•	•	•	155
	Cu	•	•	•	•	•	•	•	•	•	•	•	•	•	•	•	•	•	•	•	•	•
749	Al	•	•	•	•	•	•	•	•	•	•	•	•	•	•	•	•	•	•	•	•	156
	Cu	•	•	•	•	•	•	•	•	•	•	•	•	•	•	•	•	•	•	•	•	•
	ACSR	•	•	•	•	•	•	•	•	•	•	•	•	•	•	•	•	•	•	•	•	•

* 757, HK520, and ESG45GL cut additional types of material. Refer to product information on the following pages for more detail.

NOTE: • = Frequent use capacity. o = Maximum capacity

Gator™ ES750 Battery-Powered Cable Cutter



- Cuts 500 kcmil (MCM) copper cable in under 8 seconds.
- Compact design permits use in tight locations.
- Extra heavy blades for clean cuts and long life.
- Makes approximately 20 cuts in 750 kcmil (MCM) per battery charge.
- Easy to switch between forward and reverse direction.
- 12 volt battery recharges in one hour.
- Includes battery charger, one battery and molded carrying case.
- Choice of a 120 volt or 230 volt battery charger.

CAT. NO.	UPC NO.	DESCRIPTION
ES750-11	45380	Battery-Powered Cable Cutter, 120 V Charger
ES750-22	45381	Battery-Powered Cable Cutter, 230 V Charger
45378	45378	Extra 12 Volt Battery

SPECIFICATIONS

Cutting Capacity	750 kcmil (MCM) (400 mm ²) copper cable, 1000 kcmil (MCM) (500 mm ²) aluminum cable
Length	14-1/4" (362 mm)
Weight	5.8 lbs. (2.6 kg)
Battery	12 Volts NiCd

Gator-Plus™ Battery-Powered Cable Cutters



- Ram automatically retracts after the cut is complete. No need to push a retract lever. Tool is automatically ready to perform the next cut.
- Two-speed pump advances the ram quickly to start the cut.
- Cutting blades are specially hardened and precision ground to hold their sharpness.
- Lightweight and easy to use.
- Cutting head rotates 360° for making cuts in tight locations, and flips open to make mid-span cuts easy.
- Includes one-hour battery charger, steel carrying case and two batteries.
- Choice of a 120 volt, 230 volt, or 12 volt battery charger.
- U.S. Patent #6,206,663.

CAT. NO.	UPC NO.	DESCRIPTION
ESG50GL11	03554	Battery-Powered Cable Cutter, 120 V Charger
ESG50GL12	03555	Battery-Powered Cable Cutter, 12 V Charger
ESG50GL22	03556	Battery-Powered Cable Cutter, 230 V Charger

SPECIFICATIONS

Cutting Capacity	2" (50 mm) diameter Al or Cu cable
Length	15-3/4" (400 mm)
Weight	10 lbs. (4.5 kg)
Height	14-1/4" (362 mm)
Battery	12 Volt 2.0 Ah NiCd
Battery charge time	1 hour



Gator-Plus™ Corded Cable Cutters



- Operates directly from 120 volt or 230 volt 50 Hz electrical outlets. No need to charge batteries or worry about running out of power.
- Equipped with 15 foot (5 m) cord. Can be used with extension cords.
- Ram automatically retracts after the cut is complete. No need to push a retract lever. Tool is automatically ready to perform the next cut.
- Two-speed pump advances the ram quickly to start the cut.
- Cutting blades are specially hardened and precision ground to hold their sharpness.
- Lightweight and easy to use.
- Cutting head rotates 360° for making cuts in tight locations, and flips open to make mid-span cuts easy.
- Includes steel carrying case.
- U.S. Patent #6,206,663.

CAT. NO.	UPC NO.	DESCRIPTION
CSG50GL11	01384	Corded Cable Cutter, 120 V
CSG50GL22	01385	Corded Cable Cutter, 230 V

SPECIFICATIONS

Cutting Capacity	2" (50 mm) diameter Al or Cu cable
Length	15-3/4" (400 mm)
Weight	10 lbs. (4.5 kg)
Height	14-1/4" (362 mm)

Gator-Plus™ ESG85GL Battery-Powered Cable Cutters



- Two-speed pump advances the ram quickly to start the cut.
- Cutting blades are specially hardened and precision ground to hold their sharpness.
- Cutting head rotates 360° for making cuts in tight locations, and flips open to make mid-span cuts easy.
- Includes one-hour battery charger, steel carrying case and two batteries.
- Choice of a 120 volt, 230 volt, or 12 volt battery charger.
- U.S. Patent #6,206,663.

CAT. NO.	UPC NO.	DESCRIPTION
ESG85GL11	06761	Battery-Powered Cable Cutter, 120 V Charger
ESG85GL12	06762	Battery-Powered Cable Cutter, 12 V Charger
ESG85GL22	06763	Battery-Powered Cable Cutter, 230 V Charger

SPECIFICATIONS

Length	19-1/4" (489 mm)								
Height	12-7/8" (327 mm)								
Weight	16.4 lbs. (7.4 kg)								
Battery	12 volt 2.0 Ah NiCd								
Battery Charge Time	1 hour								
Capacity	<table border="0"> <tr> <td>Communications Cable:</td> <td>3.3" diameter (85 mm diameter)</td> </tr> <tr> <td>Lead sheathed telephone cable:</td> <td>3.3" diameter (85 mm diameter)</td> </tr> <tr> <td>Copper cable:</td> <td>3.3" diameter (85 mm diameter)</td> </tr> <tr> <td>Aluminum cable:</td> <td>3.3" diameter (85 mm diameter)</td> </tr> </table>	Communications Cable:	3.3" diameter (85 mm diameter)	Lead sheathed telephone cable:	3.3" diameter (85 mm diameter)	Copper cable:	3.3" diameter (85 mm diameter)	Aluminum cable:	3.3" diameter (85 mm diameter)
Communications Cable:	3.3" diameter (85 mm diameter)								
Lead sheathed telephone cable:	3.3" diameter (85 mm diameter)								
Copper cable:	3.3" diameter (85 mm diameter)								
Aluminum cable:	3.3" diameter (85 mm diameter)								

Gator-Plus™ ESG45GL Battery-Powered Cable, ACSR & Guy Wire Cutters



- The ram automatically retracts after the cut is complete to ready the tool for the next cut.
- The two-speed pump advances the ram rapidly to start the cut reducing cycle time.
- Cutting head rotates 360° for making cuts in tight locations, and flips open to make mid-span cuts easy.
- Includes one-hour battery charger, steel carrying case and two batteries.
- Choice of a 120 volt, 230 volt, or 12 volt battery charger.

CAT. NO.	UPC NO.	DESCRIPTION
ESG45GL11	10412	Battery-Powered ACSR Cable Cutter, 120 V Charger
ESG45GL12	10413	Battery-Powered ACSR Cable Cutter, 12 V Charger
ESG45GL22	10414	Battery-Powered ACSR Cable Cutter, 230 V Charger

SPECIFICATIONS

Length	15-1/2" (394 mm)
Height	12-1/2" (318 mm)
Weight	12.8 lbs. (5.8 kg)
Battery	12 volt 2.0 Ah NiCd
Battery Charge Time	1 hour
Capacity	
ACSR:	1590 kcmil (MCM), (Falcon 54/19)
Standard Guy Strand:	5/8" diameter (16 mm diameter)
EHS Guy Strand:	1/2" diameter (13 mm diameter)
Ground Rod:	5/8" diameter (16 mm diameter)
Rebar (schedule 60):	1/2" diameter (13 mm diameter)
Wire Rope:	5/8" diameter (16 mm diameter)
Copper and Aluminum Cable:	1500 kcmil (MCM) (800 mm ²)
Soft Steel Bolts:	5/8" diameter (16 mm diameter)

Gator-Plus™ CSG45GL Corded Cable, ACSR & Guy Wire Cutters



- Operates directly from 120 volt or 230 volt 50 Hz electrical outlets. No need to charge batteries or worry about running out of power.
- Equipped with 15 foot (5 m) cord. Can be used with extension cords.
- The ram automatically retracts after the cut is complete to ready the tool for the next cut.
- The two-speed pump advances the ram rapidly to start the cut reducing cycle time.
- Cutting head rotates 360° for making cuts in tight locations, and flips open to make mid-span cuts easy.
- Includes steel carrying case.

CAT. NO.	UPC NO.	DESCRIPTION
CSG45GL11	01382	Corded ACSR Cable Cutter, 120 V
CSG45GL22	01383	Corded ACSR Cable Cutter, 230 V

SPECIFICATIONS

Length	15-1/2" (394 mm)
Height	12-1/2" (318 mm)
Weight	12.8 lbs. (5.8 kg)
Capacity	
ACSR:	1590 kcmil (MCM), (Falcon 54/19)
Standard Guy Strand:	5/8" diameter (16 mm diameter)
EHS Guy Strand:	1/2" diameter (13 mm diameter)
Ground Rod:	5/8" diameter (16 mm diameter)
Rebar (schedule 60):	1/2" diameter (13 mm diameter)
Wire Rope:	5/8" diameter (16 mm diameter)
Copper and Aluminum Cable:	1500 kcmil (MCM) (800 mm ²)
Soft Steel Bolts:	5/8" diameter (16 mm diameter)



Hydraulic Cable Cutter Sets

750H767 model with
767 Hand Pump

- Cuts in 7 seconds. Jaws slide open quickly to save time between cuts.
- 11-ton (97 kN) ram powers cutting jaws. Jaws are specially hardened and precision ground to hold sharpness.
- Lightweight and easy to use.

SPECIFICATIONS

Capacity	1000 kcmil (MCM) (500 mm ²) copper or aluminum cable	
Jaw opening	1-15/16" (49 mm)	
Weight	750 – 25 lbs. (11.3 kg)	750F1725 – 40 lbs. (18.1 kg)
	750H767 – 29 lbs. (13.2 kg)	750E975 – 84 lbs. (38.1 kg)

CAT. NO.	UPC NO.	DESCRIPTION
750	29149	Hydraulic Cable Cutter & Ram in Storage Box
750H767	17450	Hydraulic Cable Cutter with 767 Hand Pump, Ram, Hydraulic Hose in Storage Box
750E975	34203	Hydraulic Cable Cutter with 975 Electric Pump, Ram, Hydraulic Hose in Storage Box
751	22279	Hydraulic Cable Cutter Head for use with Greenlee 746 Hydraulic Ram Also order 51385 Elbow (see below).
746C	17451	Ram Unit
23955	23955	Steel Storage Box
51385	51385	Elbow for 746 Ram
17459	17459	Replacement Cutter Blade

Hydraulic ACSR Cable Cutter



- Flip open head provides strength while making it easy to cut long lengths.
- Head rotates 180°.
- Thumb release lever for quick blade retraction.

SPECIFICATIONS

CAT. NO.	UPC NO.	DESCRIPTION
HK520	08031	Hydraulic ACSR Cable Cutter
00336	00336	Cutter Blade
00301	00301	Fixed Cutter Head

Capacity	Aluminum and Copper Cable, ACSR: 3/4" (19 mm) Standard Guy Wire, Ground Rod, Rebar: 1/2" (13 mm) Soft Steel Bolts: 11/16" (17 mm) Wire Rope: 3/4" (19 mm)
Length	14.5" (368 mm)
Weight	5.7 lbs. (2.6 kg)

Hydraulic Communications Cable Cutter Head



- Easily cuts large diameter communication cable and underground distribution cable.
- Swiveling handle allows for quick positioning for cuts.
- 3/8" male screw type coupler.
- See page 333 for hydraulic hose and pump selection.

CAT. NO.	UPC NO.	DESCRIPTION
SDK202GL	03137	Hydraulic Communications Cable Cutter Head

SPECIFICATIONS

Capacity	3-1/2" (90 mm) diameter Al or Cu cable
Weight	27.5 lb. (12.5 kg).
Length	18-7/8" (480 mm)
Maximum Operating Pressure	10,000 psi (700 bar)

Compact Ratchet Cable Cutters



- Simple, one-hand operation.
- Compact – convenient for working in tight places and stores easily in tool pouches.
- Single speed ratchet mechanism.
- Blade release allows blades to be opened in mid-cut.
- Heavy-duty blades provide long life.

CAT. NO.	UPC NO.	DESCRIPTION
759	45277	Compact Ratchet Cable Cutter
760	17600	Compact Ratchet Cable Cutter

SPECIFICATIONS

759			
Capacity	Copper	Aluminum	Communications Cable
Maximum	500 kcmil (MCM) (240 mm ²)	750 kcmil (MCM) (400 mm ²)	1-1/8" dia. (28 mm ²)
Frequent Use	400 kcmil (MCM) (185 mm ²)	600 kcmil (MCM) (300 mm ²)	
Length 10-1/2" (262 mm)	Weight 1.4 lbs. (0.6 kg)		
760			
Capacity	Copper	Aluminum	Communications Cable
Maximum	1000 kcmil (MCM) (500 mm ²)	1000 kcmil (MCM) (500 mm ²)	1-3/4" dia. (42 mm ²)
Frequent Use	750 kcmil (MCM) (400 mm ²)	1000 kcmil (MCM) (500 mm ²)	
Length 11-3/4" (298 mm)	Weight 1.75 lbs. (0.8 kg)		

Two-Hand Ratchet Cable Cutter



- Two-handed operation provides more leverage and makes cutting large cables easier.
- Short fiberglass handles make it easy to use in tight places and to store in tool boxes.
- Single speed ratchet mechanism.
- Blade release allows blades to be opened in mid-cut.
- Heavy duty forged steel blades provide long life.

CAT. NO.	UPC NO.	DESCRIPTION
761	11761	Two-Hand Ratchet Cable Cutter

SPECIFICATIONS

761			
Capacity	Copper	Aluminum	Communications Cable
Maximum	750 kcmil (MCM) (400 mm ²)	1000 kcmil (MCM) (500 mm ²)	1-1/8" dia. (28 mm ²)
Length 10-3/4" (273 mm)	Weight 3.6 lbs. (1.6 kg)		



Performance Ratchet Cable Cutters



Both models feature:

- Simple, one-hand operation.
- Two-speed ratchet mechanism adjusts for light/heavy cutting.
- Well-suited for tight work spaces.
- Specially designed blade improves cutting capacity.

CAT. NO.	UPC NO.	DESCRIPTION	WEIGHT	
			LBS.	kg
45206	45206	Performance Ratchet Cable Cutter	1.5	.7
45207	45207	Performance Ratchet Cable Cutter	2.4	1.1

SPECIFICATIONS

Capacity	Copper	Aluminum	Communications Cable
45206			
Maximum	600 kcmil (MCM) (300 mm ²)	600 kcmil (MCM) (300 mm ²)	1-3/8" (35 mm) dia.
Frequent Use	500 kcmil (MCM) (240 mm ²)	500 kcmil (MCM) (240 mm ²)	
Length 10" (254 mm)	Jaw opening 1-7/16" (36.5 mm)		
45207			
Maximum	750 kcmil (MCM) (400 mm ²)	1000 kcmil (MCM) (500 mm ²)	2" (50 mm) dia.
Frequent Use	600 kcmil (MCM) (300 mm ²)	750 kcmil (MCM) (400 mm ²)	
Length 11" (279 mm)	Jaw opening 2" (50 mm)		

Telco Ratchet Cutter



Not for use on ACSR or steel jacketed cable.

This versatile cutter has a specially designed moving blade to handle the larger diameter telephone cable and soft drawn copper and aluminum.

- Cuts up to 2,700 pair telephone cable or up to 750 kcmil (MCM) (400 mm²) soft drawn copper and aluminum.
- Blade release for safety and fast backout.
- High carbon tool steel blades are heat treated for long life.
- Ratchet lock.
- Blades are manufactured from high carbon tool steel and heat-treated for long life.
- Rust-resistant, black oxide finish.

SPECIFICATIONS

Length	11-1/2" (287 mm)	Weight	2.8 lbs. (1.3 kg)
---------------	------------------	---------------	-------------------

CAT. NO.	UPC NO.	DESCRIPTION
45240	45240	Telco Ratchet Cutter
45241	45241	Movable Blade Replacement
45242	45242	Fixed Blade Replacement

Ratchet Cable Cutters



- High leverage for easier cutting.
- Anti-slip mechanism ensures positive ratcheting.
- One handle stationary while the other ratchets for use in deep boxes or against walls.
- Durable, lightweight fiberglass handles.

CAT. NO.	UPC NO.	DESCRIPTION
763	05542	Ratchet Cable Cutter, 13-3/4"
764	35516	Ratchet Cable Cutter, 19-1/8"
36037	36037	763, 764 Cutter Head Unit (2 Blades)

SPECIFICATIONS

Capacity	Copper	Aluminum	Communications Cable
763			
Maximum	500 kcmil (MCM) (240 mm ²)	795 kcmil (MCM) (400 mm ²)	1-3/16" dia.
Frequent Use	350 kcmil (MCM) (150 mm ²)	750 kcmil (MCM) (400 mm ²)	
Length 13-3/4" (349 mm);	Weight 4.8 lbs. (2.2 kg)		
764			
Maximum	750 kcmil (MCM) (400 mm ²)	795 kcmil (MCM) (400 mm ²)	1-3/16" dia.
Frequent Use	500 kcmil (MCM) (240 mm ²)	750 kcmil (MCM) (400 mm ²)	
Length 19-1/8" (486 mm)	Weight 5.3 lbs. (2.4 kg)		

High Performance Ratchet Cable Cutters



- Two-speed mechanism saves cutting time by closing the blades rapidly and shifting to normal speed to perform the cut.
- No more pushing on stubborn release buttons—the blades open automatically when the cut is complete.
- Completely new ratchet mechanism improves durability.
- Narrow profile permits use in deep boxes, against walls, or on floors.
- Durable, lightweight fiberglass handles.

CAT. NO.	UPC NO.	DESCRIPTION
773	01876	Hi Performance Ratchet Cable Cutter, 15-1/2"
774	01878	Hi Performance Ratchet Cable Cutter, 19-1/8"

SPECIFICATIONS

Capacity	Copper	Aluminum	Communications Cable
773			
Maximum	500 kcmil (MCM) (240 mm ²)	795 kcmil (MCM) (400 mm ²)	1-3/16" dia.
Frequent Use	350 kcmil (MCM) (150 mm ²)	750 kcmil (MCM) (400 mm ²)	
Length 15-1/2" (394 mm);	Weight 5.3 lbs. (2.4 kg)		
774			
Maximum	750 kcmil (MCM) (400 mm ²)	795 kcmil (MCM) (400 mm ²)	1-3/16" dia.
Frequent Use	500 kcmil (MCM) (240 mm ²)	750 kcmil (MCM) (400 mm ²)	
Length 19-1/8" (486 mm)	Weight 5.8 lbs. (2.6 kg)		

Heavy-Duty Ratchet Cable Cutters



- Extra thick blades, ground flat to reduce potential for breakage.
- Ratchet action for heavy-duty cutting.
- Two cutting actions – fast scissor cutting for small cable and insulation; converts automatically to ratchet mode.
- Anti-slip mechanism for positive ratchet action.
- Rubber boot protects ratchet mechanism.

CAT. NO.	UPC NO.	DESCRIPTION
756	34081	Heavy-Duty Ratchet Cable Cutter with rubber boot.
756U	38793	Heavy-Duty Ratchet Cable Cutter without rubber boot.
34188	34188	Cutter Head Unit (Includes 2 Blades)

SPECIFICATIONS

Capacity	Copper	Aluminum
Maximum	1500 kcmil (MCM) (800 mm ²)	1500 kcmil (MCM) (800 mm ²)
Frequent Use	1000 kcmil (MCM) (500 mm ²)	1000 kcmil (MCM) (500 mm ²)
Length 27-1/2" (698 mm) long,	Jaw opening 2" (51 mm)	
Weight 11.41 lbs. (5.17 kg)		



Ratchet ACSR/Cable Cutter



CAT. NO.	UPC NO.	DESCRIPTION
757	34084	Ratchet ACSR/Cable Cutter
757U	38794	Ratchet ACSR/Cable Cutter without rubber boot
34187	34187	Cutter Head Unit (Includes 2 Blades)

- Extra thick blades, ground flat to reduce potential for breakage.
- Ratchet action for increased cutting power.
- Two cutting actions – fast scissor cutting for small cable; converts automatically to ratchet mode.
- Anti-slip mechanism for positive ratchet action.
- Rubber boot protects ratchet mechanism.

SPECIFICATIONS

Capacity	954 kcmil (MCM) (477 mm ²) ACSR, 1/2" (12.7 mm) soft steel rod	
Length	29-1/4" (743 mm),	Jaw opening 1.18" (30 mm)
Weight	12.22 lbs. (5.54 kg)	

EHS Guy Wire Cutter



CAT. NO.	UPC NO.	DESCRIPTION
758	01274	Heavy-Duty Ratchet Guy Wire Cutter
03548	03548	Cutter Head Unit (Includes Blades, Blade Holder, Insert and Hardware)

- Cuts 1/2" Extra High Strength (EHS) and standard guy wire.
- Cuts 1/2" (12.7 mm) mild steel rods and bolts.
- Has two cutting actions – single motion cutting for small cable. Ratchet action for heavy-duty cutting.
- Anti-slip mechanism for positive ratchet action.

SPECIFICATIONS

Capacity	1/2" EHS and standard Guy Wire, 1/2" Mild Steel Rods and Bolt.	
Length	27-3/4" (704 mm).	
Weight	10 lbs. 12 oz. (4.8 kg)	

Guy Wire Cutter Dies



SPECIFICATIONS

Cutting Capacities

Guy Wire: 5/8 in. (16 mm) dia.	Ground Rod: 5/8 in. (16 mm) dia.
EHS Guy Wire: 5/8 in. (16 mm) dia.	Soft Steel Bolts: 5/8 in. (16 mm) dia.
Rebar (grade 60): 5/8 in. (16 mm) dia.	ACSR: 477 kcmil (MCM) (240 mm ²)

- Works with any crimping tool that accepts 12-ton "U" type dies.
- Less costly than dedicated cutting tools.
- Simple to install in crimping tools.
- Require no adjustments for cutting different materials.
- Will cleanly cut guy wire (including EHS), grade 60 rebar, ground rod, soft steel bolts up to 5/8" (16 mm) and up to 477 kcmil (MCM) (240 mm²) ACSR.
- Patent 5,775,158.

CAT. NO.	UPC NO.	DESCRIPTION
00949	00949	Cutting dies for 12-ton "U" die type crimping tools

Wire Cutter



CAT. NO.	UPC NO.	DESCRIPTION
1915	31892	Wire Cutter, 30-10 AWG (.08-6 mm ²)

Small, economical wire cutter that fits well in any tool belt.

- 30-10 AWG (.05-6 mm²) copper wire.
- Stamped and precision ground from high carbon tool steel.
- Heat-treated for long life.
- Return spring.
- Pivot joints have hardened steel bushings.
- Cushioned vinyl handle grip.
- Rust-resistant, black oxide finish.

SPECIFICATIONS

Capacity	30 - 10 AWG (.05mm ² - 6 mm ² *) copper wire	
Length	5-1/2" (140 mm)	Weight .2 lb. (90 g)

*Comparable Conductor

Cable Cutter



- Heavy-duty forged steel to cut copper or aluminum.
- Heat treated, precision ground, shear action curved cutting blades.
- Plastic coated, high leverage handles.
- Made in USA.
- Rust-resistant, black oxide finish.

CAT. NO.	UPC NO.	DESCRIPTION
727	31291	Cable Cutter

SPECIFICATIONS

Capacity	Copper	Aluminum	Communications Cable
Maximum	2/0 (70 mm ²)		
Frequent Use	#1 AWG (35 mm ²)	2/0 (70 mm ²)	100 pair
Length	9-1/4" (235 mm)	Weight	1 lb. (.45 kg)

Heavy-Duty Cable Cutters



718F, 704, 705, and 706

- Strong, lightweight fiberglass handles.
- Adjustable pivot bolt provides for blade adjustment.

704, 705, and 706

- Replaceable, forged, heat treated, and precision ground blades.
- Made in USA.

CAT. NO.	UPC NO.	DESCRIPTION
718F	10507	Heavy-Duty Cable Cutter
704	24564	Heavy-Duty Cable Cutter
705	05923	Heavy-Duty Cable Cutter
706	22291	Heavy-Duty Cable Cutter
24565	24565	704 Cutter Unit (Includes 2 Blades)
24567	24567	704 Handle Unit (Includes Handle, Sleeve, Grip)
06555	06555	705 Cutter Unit (Includes 2 Blades)
05930	05930	705 Handle Unit (Includes Handle, Sleeve, Grip)
22292	22292	706 Cutter Unit (Includes 2 Blades)
22296	22296	706 Handle Unit (Includes Handle, Sleeve, Grip)

SPECIFICATIONS

	718F	704	705	706
Length	17-1/2" (444 mm)	21" (533 mm)	25-1/2" (648 mm)	31-1/2" (800 mm)
Weight	2.8 lbs. (1.3 kg)	3.01 lbs. (1.37 kg)	5.5 lbs. (2.5 kg)	6.2 lbs. (2.8 kg)

CAPACITIES

Capacity	Copper	Aluminum	Communications Cable
718F			
Maximum	350 kcmil (MCM) (150 mm ²)		1" (25 mm) dia.
Frequent Use	4/0 AWG (95)	350 kcmil (MCM) (150 mm ²)	
704			
Maximum	350 kcmil (MCM) (150 mm ²)	500 kcmil (MCM) (240 mm ²)	1-1/4" (32 mm) dia.
Frequent Use	250 kcmil (MCM) (120 mm ²)	350 kcmil (MCM) (150 mm ²)	
705			
Maximum	500 kcmil (MCM) (240 mm ²)	1000 kcmil (MCM) (500 mm ²)	1-3/4" (44 mm) dia.
Frequent Use	350 kcmil (MCM) (150 mm ²)	750 kcmil (MCM) (400 mm ²)	
706			
Maximum	750 kcmil (MCM) (400 mm ²)	1000 kcmil (MCM) (500 mm ²)	1-1/2" (38 mm) dia.
Frequent Use	500 kcmil (MCM) (240 mm ²)	750 kcmil (MCM) (400 mm ²)	



Cable Cutter



- Economical, lightweight, fits easily into tool boxes.
- Heat-treated, precision ground, shear action blades.
- Steel handles with rubber grips for leverage.
- Made in USA.

CAT. NO.	UPC NO.	DESCRIPTION
718	30208	Cable Cutter

SPECIFICATIONS

Capacity	Copper	Aluminum
Maximum	350 kcmil (MCM) (150mm ²)	
Frequent Use	4/0 (95 mm ²)	
Length	18" (457 mm)	Weight 2.78 lbs. (1.3 kg)

Heavy-Duty Communication Cable Cutter



- Forged and heat-treated blades specially designed for communications cable.
- Easily cuts cables up to 2-1/4" (57 mm) in diameter.
- Makes clean cuts with minimal distortion on lead-, rubber-, PVC- and polyethylene-sheathed cables.
- Blades and handles are replaceable in case of damage.
- Precision ground shear-type blades.
- Fiberglass handles with non-slip rubber grips.

CAT. NO.	UPC NO.	DESCRIPTION
765	06011	Heavy-Duty Communications Cutter

SPECIFICATIONS

Cutting Capacity	2-1/4" (57mm) Communications Cable (900 pair, 24 AWG)	
Length	37" (940 mm)	
Weight	7.2 lbs. (3.3 kg)	

ACSR Cable Cutter



- Precision machined, forged steel blades.
- Cuts ACSR service entrance cable.
- Steel handles with rubber hand grips.

CAT. NO.	UPC NO.	DESCRIPTION
749	32913	Heavy-Duty Cable Cutter
34320	34320	Replacement Bolt & Nut Set

SPECIFICATIONS

Capacity	ACSR cable – 2/0, 7/16" (11.1 mm) piano wire – 1/8" (3.2 mm) copper/aluminum cable – 350 kcmil (MCM) (150 mm ²)	
Length	28" (711 mm)	
Weight	5.66 lbs. (2.6 kg)	

Greenlee Crimping Tool Capacities

TOOL TYPE	4 TON	4.5 TON (4)	6 TON	12 TON DIE TYPE (5)	15 TON	ROTATING DIE (1)				QUAD-POINT DIELESS		DIELESS			
	EK410	K4250 K425BG	EK22GL CK22GL ECCX CCCX HCCX RCCX	RK1230 HK1230 EK1230 CK1230 HKL1230	RK1240 HK1240 EK1240 CK1240	RK1550	K111	K05-1GL	K09-2GL	K09-3GL	RK06AT(C) HK06AT(C) EK06AT(C) CK06AT(C)	RK06FT HK06FT EK06FT CK06FT	1980	1989	1990
CONNECTOR TYPE															
INDUSTRIAL															
Copper Lugs	#8 - 250	#8 - 500	#8 - 600 (2)	#8 - 750	#8 - 750	#8 - 1000	#8 - 1	#8 - 1/0	#8 - 4/0	3/0 - 400	#6 - 500	#6 - 750	#8 - 4/0	#4 - 500	#4 - 1000
Copper Splices	#8 - 250	#8 - 500	#8 - 600 (2)	#8 - 400	#8 - 750	#8 - 1000	#8 - 1	#8 - 1/0	#8 - 4/0	3/0 - 400	#6 - 500	#6 - 750	#8 - 4/0	#4 - 500	#4 - 1000
Aluminum Lugs		#8 - 4/0	#8 - 300 (3)	#8 - 750	#8 - 750	#8 - 1000					#6 - 400	#6 - 750		#6 - 500	#6 - 1000
Aluminum Splices		#8 - 4/0	#8 - 300 (3)	#8 - 400	#8 - 750	#8 - 1000					#6 - 400	#6 - 750		#6 - 500	#6 - 1000
Copper "C" Taps		#10 - #2	#12 - #2 (4)	#12 - 400	#12 - 400	#8 - 1000									
Aluminum "H" Taps				#6 - 500	#6 - 500	#6 - 1000									
Aluminum Pin Adapters		#6 - 1/0	#6 - 1/0 (3)	#6 - 500	#6 - 750	#6 - 750								#6 - 500	#6 - 750
GROUNDING															
Ground Grid Connectors			#6 - #3 (4)	#6 - 500	#6 - 500	#6 - 500									
Copper "E" Taps				#6 - 500	#6 - 500	#6 - 500									
OVERHEAD															
5/8" Service Ent. Connectors	#10 - 1/0	#10 - 1/0	#10 - 1/0 (4)	#10 - 1/0	#10 - 1/0	#10 - 1/0					#8 - 1/0	#8 - 1/0			
.840 Service Ent. Connectors	1/0 - 4/0	1/0 - 4/0	1/0 - 4/0 (4)	1/0 - 4/0	1/0 - 4/0	1/0 - 4/0					#4 - 350	#4 - 350			
Aluminum "H" Taps		#6 - 4/0	#6 - 4/0 (4)	#6 - 500	#6 - 500	#6 - 900									
Copper "H" Taps		#10 - #2	#12 - #2 (4)	#12 - 4/0	#12 - 4/0	#12 - 4/0									
Copper Tension Splice		#6 - 2/0	#6 - 2/0 (4)	#6 - 500	#6 - 500	#6 - 500					#6 - 4/0	#6 - 4/0			
All Aluminum Tension Splice		#6 - 4/0	#6 - 4/0 (4)	#6 - 587.5	#6 - 587.5	#6 - 587.5									
One Piece ACSR Tension Splice		#4 - 1/0	#4 - 1/0 (4)	#4 - 556.5	#4 - 556.5	#4 - 556.5					#4 - 477	#4 - 477			
Two Piece ACSR Tension Splice		#2 - 477	#2 - 4/0 (4)	#2 - 556.5	#2 - 556.5	#2 - 900									
Aluminum Jumper Splice		#4 - 2668	#4 - 266.8 (4)	#4 - 556.5	#4 - 556.5	#4 - 795									
Stirrups		#2 - 4/0	#6 - 4/0 (4)	#6 - 500	#6 - 500	#6 - 500									
Aluminum Lugs		#2 - 1/0	#4 - 4/0 (4)	#4 - 556.5	#4 - 556.5	#4 - 795									
Copper Lugs		#6 - 1/0	1/0 - 2/0 (4)	1/0 - 500	1/0 - 500	1/0 - 500									

NOTES: (1) Die wheels are rotated to match the cable size. Dies are color coded and marked with the cable size.
 (2) Capacity using Greenlee K-22 dies.
 (3) Capacity using Greenlee KA22 dies.
 (4) Capacity using "W" dies.
 (5) Capacity using "U" dies.

Manual Crimping Tool



- Designed for crimping a wide range of overhead service entrance connections, overhead splices, and overhead taps.
- Easy to use MD-6 type "pop" tool.
- Equipped with D₃ die groove and either "BG" or "O" die groove.
- The D₃ die groove serves as a die seat for all Greenlee and industry "W" type dies.
- Bent fiberglass handles provide a solid grip, good leverage, and better durability than wood.
- Teflon impregnated bushings at pivot joints provide smooth operation and long life.
- Complete crimps are assured with an over-center cam mechanism.
- Tool can easily be checked visually for proper adjustment, and can be adjusted with Allen wrenches.

CAT. NO.	UPC NO.	DESCRIPTION
K425O	02064	Crimping Tool with D ₃ and O die grooves
K425BG	02065	Crimping Tool with D ₃ and BG die grooves

SPECIFICATIONS

Capacity	See capacity chart above
Crimping Force	9,000 lb. (40 kN)
Length	25-3/8" (645 mm)
Weight	7.1 lbs. (3.2 kg)



Gator-Plus™ Battery-Powered 4-Ton Crimping Tools



EK410



- New breakthrough hydraulic pump design results in an extremely compact battery-powered crimping tool with capacity to 250 kcmil (MCM) copper color-coded connectors. Also crimps 5/8 and 840 service entrance connectors.
- Special compact 9.6 volt Ni-Cd battery reduces weight and size.
- Slim profile and light weight provide for one-hand operation.
- Can complete approximately 85 crimps per battery charge with 4/0 copper connectors.
- Ram automatically retracts to signal that crimp is complete.
- Ram can be retracted in mid-cycle to adjust connector.
- Flip-open crimping head rotates 360°.
- UL and cUL Classified with Anderson, Blackburn, Burndy, ILSCO, Panduit, Penn-Union, and Thomas & Betts **copper** color-coded code connectors.
- Includes two batteries, battery charger, and molded carrying case.
- Choice of 120 volt, 230 volt, or 12 volt battery charger.

CAT. NO.	UPC NO.	DESCRIPTION
EK41011	02033	4-Ton Battery-Powered Crimping Tool, 120 V Charger
EK41012	02034	4-Ton Battery-Powered Crimping Tool, 12 V Charger
EK41022	02035	4-Ton Battery-Powered Crimping Tool, 230 V Charger

Crimping Dies shown below.

SPECIFICATIONS

Capacity	#8 AWG to 250 kcmil (MCM) copper color-coded connectors 5/8 service entrance connectors 840 service entrance connectors
Crimping Force	7,900 lb. (35 kN)
Length	14" (356 mm)
Width	3-1/8" (79 mm)
Weight	3.6 lbs. (1.6 kg)
Crimp Cycle Time	~4 seconds
Battery	9.6 volt 1.3 Ah Ni-Cd battery
Battery Charge Time	1 Hour

Crimping Dies for 4-Ton EK410 Tools



KC4 DIES FOR SERVICE ENTRANCE CONNECTORS

CAT. NO.	UPC NO.	DESCRIPTION
KC4-10	02021	Crimping Dies for 5/8" Service Entrance Connectors
KC4-840	02022	Crimping Dies for 840 Service Entrance Connectors

4-TON CRIMPING DIE KIT*

CAT. NO.	UPC NO.	DESCRIPTION
KC4CU	02037	Complete Die Set for copper connector. Includes dies for #8 to 250 kcmil (MCM) copper connectors (dies can be stored in tool carrying case).

DIES FOR CRIMPING COLOR-CODED COPPER LUGS & SPLICES*

CAT. NO.	UPC NO.	COPPER CABLE SIZE	COLOR CODE
KC4-8	02075	8 AWG	Red
KC4-6	02076	6 AWG	Blue
KC4-4	02077	4 AWG	Gray
KC4-2	02078	2 AWG	Brown
KC4-1	02079	1 AWG	Green
KC4-1/0	02080	1/0 AWG	Pink
KC4-2/0	02081	2/0 AWG	Black
KC4-3/0	02082	3/0 AWG	Orange
KC4-4/0	02083	4/0 AWG	Purple
KC4-250	02084	250 kcmil (MCM)	Yellow

*Note: Connections are UL and cUL classified for copper when used with Anderson, Blackburn, FCI Burndy, ILSCO, Panduit, Thomas & Betts and Penn-Union color-coded lugs and splices.



Gator-Plus™ Battery-Powered 6-Ton Crimping Tools



EK22GL11

- Ram automatically retracts after the crimp is complete. Operator doesn't need to push a retract lever.
- A two-speed pump advances the ram quickly to start the crimp. Crimp times range from about 5 to 7 seconds depending on the connector.
- Powerful 12 volt 2.0 Ah battery provides up to 120 crimps per charge.
- UL Classified and CSA Certified with Anderson, Blackburn, Burndy, ILSCO, Panduit, Penn-Union and T&B **copper** lugs and splices to 600 kcmil (MCM). UL & CUL classified with Anderson, Blackburn, Burndy, ILSCO, Panduit, Penn-Union, & Thomas & Betts **aluminum** lugs & splices to 350 kcmil (MCM).
- Flip-top style opens easily with a simple pull on the side piece and rotates 360°.
- Includes one-hour battery charger, steel carrying case and two batteries.
- Choice of a 120 volt, 230 volt, or 12 volt battery charger.
- Equipped with die adapters for "W" type dies. The adapters are equivalent to "D₃" dies.
- U.S. Patent #6,206,663.

CAT. NO.	UPC NO.	DESCRIPTION
EK22GL11	03551	6-Ton Battery-Powered Crimping Tool, 120 V Charger
EK22GL12	03552	6-Ton Battery-Powered Crimping Tool, 12 V Charger
EK22GL22	03553	6-Ton Battery-Powered Crimping Tool, 230 V Charger

Crimping Dies on page 170.

SPECIFICATIONS

Capacity	Color-coded copper lugs and splices, 600 kcmil (MCM). Color-coded aluminum lugs and splices, 350 kcmil (MCM). For capacity with other types of connectors, see chart on page 157.		
Crimping Force	12,000 lb (53 kN)	Length	12-3/8" (314 mm)
Height	11-3/4" (298 mm)	Weight	9.7 lbs. (4.4 kg)
Battery	12 Volt 2.0 Ah NiCd	Battery charge time	1 hour

Gator-Plus™ 6-Ton Corded Crimping Tools



- Operates directly from 120 volt or 230 volt 50 Hz electrical outlets. No need to charge batteries or worry about running out of power.
- Equipped with 15 foot (5 m) cord. Can be used with extension cords.
- Ram automatically retracts after the crimp is complete. Operator doesn't need to push a retract lever.
- A two-speed pump advances the ram quickly to start the crimp. Crimp completion time is reduced by over 25%. Crimp times range from about 5 to 7 seconds depending on the connector.
- UL Classified and CSA Certified with Anderson, Blackburn, Burndy, ILSCO, Panduit, Penn-Union and T&B **copper** lugs and splices to 600 kcmil (MCM). UL & CUL classified with Anderson, Blackburn, Burndy, ILSCO, Panduit, Penn-Union, & Thomas & Betts **aluminum** lugs & splices to 350 kcmil (MCM).
- Flip-top style opens easily with a simple pull on the side piece and rotates 360°.
- Equipped with die adapters for "W" type dies. The adapters are equivalent to "D₃" dies.
- Includes steel carrying case.
- U.S. Patent #6,206,663.

CAT. NO.	UPC NO.	DESCRIPTION
CK22GL11	01368	6-Ton Corded Crimping Tool, 120 V
CK22GL22	01369	6-Ton Corded Crimping Tool, 230 V

SPECIFICATIONS

Capacity	Color-coded copper lugs and splices, 600 kcmil (MCM). Color-coded aluminum lugs and splices, 350 kcmil (MCM). For capacity with other types of connectors, see chart on page 176.		
Crimping Force	12,000 lb. (53 kN)	Height	11-3/4" (298 mm)
Length	12-3/8" (314 mm)	Weight	9.7 lbs. (4.4 kg)

Gator-Plus™ 12-Ton Battery-Powered Crimping Tools



EK1230



EK1240



EK1240K



EK1240C

- Three crimping head choices: EK1230 for industry “U” type dies with 1.20" (30 mm) opening, EK1240 for industry “U” type dies with 1.65" (42 mm) opening, and EK1240K for Kearney PH2 type dies.
- New head designs result in lower weight and improved durability – tested to 50,000 crimp cycles.
- Two-speed pump to reduce cycle time.
- Ram automatically retracts when crimp cycle is complete – a Greenlee exclusive.
- Crimping heads rotate 360°.
- Covered head models have two layers of PVC that total approximately 3/16" (4.8 mm) thick. The outer layer is black and the inner layer is red.
- Powerful 12 volt 2.0Ah battery provides up to 35 crimps per charge.
- Includes one-hour battery charger, steel carrying case, and two batteries.
- U.S. Patent 6,206,663.

CAT. NO.	UPC NO.	DESCRIPTION
EK123011	06429	12-Ton Battery-Powered Crimping Tool, 1.2" (30 mm) opening, 120 V Charger
EK123012	06431	12-Ton Battery-Powered Crimping Tool, 1.2" (30 mm) opening, 12 V Charger
EK123022	06432	12-Ton Battery-Powered Crimping Tool, 1.2" (30 mm) opening, 230 V Charger
EK1230C11	07190	12-Ton Battery-Powered Crimping Tool, 1.2" (30 mm) opening, PVC covered, 120 V Charger
EK1230C12	07191	12-Ton Battery-Powered Crimping Tool, 1.2" (30 mm) opening, 12 V Charger
EK1230C22	07192	12-Ton Battery Powered Crimping Tool, 1.2" (30 mm) opening, PVC covered, 230 V Charger
EK124011	06436	12-Ton Battery-Powered Crimping Tool, 1.65" (42 mm) opening, 120 V Charger
EK124012	06437	12-Ton Battery-Powered Crimping Tool, 1.65" (42 mm) opening, 12 V Charger
EK124022	06439	12-Ton Battery-Powered Crimping Tool, 1.65" (42 mm) opening, 230 V Charger
EK1240C11	07193	12-Ton Battery-Powered Crimping Tool, 1.65" (42 mm) opening, PVC covered, 120 V Charger
EK1240C12	07194	12-Ton Battery-Powered Crimping Tool, 1.65" (42 mm) opening, PVC covered, 12 V Charger
EK1240C22	07195	12-Ton Battery-Powered Crimping Tool, 1.65" (42 mm) opening, PVC covered, 230 V Charger
EK1240K11	06443	12-Ton Battery-Powered Crimping Tool, Kearney head, 120 V Charger
EK1240K12	06444	12-Ton Battery-Powered Crimping Tool, Kearney head, 12 V Charger
EK1240K22	06445	12-Ton Battery-Powered Crimping Tool, Kearney head, 230 V Charger
EK1240KC11	07196	12-Ton Battery-Powered Crimping Tool, Kearney Head, PVC covered, 120 V Charger
EK1240KC12	07197	12-Ton Battery-Powered Crimping Tool, Kearney Head, PVC covered, 12 V Charger
EK1240KC22	07198	12-Ton Battery-Powered Crimping Tool, Kearney Head, PVC covered, 230 V Charger

SPECIFICATIONS

Capacity EK1230 & EK1240 – See crimping tool capacity chart on page 157;

EK1240K – ASCR terminals 1033 kcmil (MCM),
 ASCR tension fittings 477 kcmil (MCM)

Crimping Force 24,000 lb (106 kN)

Length EK1230 – 14-5/8" (371 mm); EK1240 – 15-1/4" (387 mm);
 EK1240K – 15-3/4" (398 mm)

Weight EK1230 – 14.1 lbs (6.4 kg);
 EK1240 & EK1240K – 14.9 lbs. (6.8 kg)

Gator-Plus™ 12-Ton Corded Crimping Tools



- Operates directly from 120 volt or 230 volt electrical outlets. No need to charge batteries or worry about running out of power.
- Equipped with 15 foot (5 m) cord. Can be used with extension cords.
- Two crimping head choices: CK1230 for industry "U" type dies with 1.20" (30 mm) opening, and CK1240 for industry "U" type dies with 1.65" (42 mm) opening.
- New head designs result in lower weight and improved durability – tested to 50,000 crimp cycles.
- Two-speed pump to reduce cycle time.
- Ram automatically retracts when crimp cycle is complete – a Greenlee exclusive.
- Crimping heads rotate 360°.
- Includes steel carrying case.

CAT. NO.	UPC NO.	DESCRIPTION
CK123011	01370	Corded 12-Ton Crimping Tool, 1.2" (30 mm) opening, 120 V
CK123022	01372	Corded 12-Ton Crimping Tool, 1.2" (30 mm) opening, 230 V
CK124011	01373	Corded 12-Ton Crimping Tool, 1.65" (42 mm) opening, 120 V
CK124022	01374	Corded 12-Ton Crimping Tool, 1.65" (42 mm) opening, 230 V

SPECIFICATIONS	
Capacity	EK1230 & EK1240 – See crimping tool capacity chart on page 157
Crimping Force	24,000 lb (106 kN)
Length	CK1230: 14-5/8" (371 mm); CK1240: 15-1/4" (387 mm)
Weight	CK1230: 14.1 lbs (6.4 kg); CK1240: 14.9 lbs (6.8 kg)

12-Ton Manual Hydraulic Crimping Tools



HK1230



HK1240



HK1240K



HK1240KC

- Three crimping head choices: HK1230 for industry "U" type dies with 1.20" (30 mm) opening, HK1240 for industry "U" type dies with 1.65" (42 mm) opening, and HK1240K for Kearney PH2 type dies.
- New head designs result in lower weight and improved durability – tested to 50,000 crimp cycles.
- Two-speed pump to reduce cycle time.
- Ram automatically retracts when crimp cycle is complete – a Greenlee exclusive.
- Crimping heads rotate 360°.
- Smaller and lighter than competitive tools.
- Covered head models have two layers of PVC that total approximately 3/16" (4.8 mm) thick. The outer layer is black and the inner layer is red.
- Includes steel carrying case.
- U.S. Patent #6,206,663.

CAT. NO.	UPC NO.	DESCRIPTION
HK1230	06426	12-Ton Hydraulic Crimping Tool, 1.2" (30 mm) opening
HK1230C	07199	12-Ton Hydraulic Crimping Tool, 1.2" (30 mm) opening, PVC covered
HK1240	06427	12-Ton Hydraulic Crimping Tool, 1.65" (42 mm) opening
HK1240C	07202	12-Ton Hydraulic Crimping Tool, 1.65" (42 mm) opening, PVC covered
HK1240K	06428	12-Ton Hydraulic Crimping Tool, Kearney head
HK1240KC	07203	12-Ton Hydraulic Crimping Tool, Kearney head, PVC covered

Crimping Dies on page 171.

SPECIFICATIONS	
Capacity	HK1230 & HK1240 – See crimping tool capacity chart on pg. 157; HK1240K – ASCR terminals 1033 kcmil (MCM), ASCR tension fittings 477 kcmil (MCM)
Crimping Force	24,000 lbs (106 kN)
Length	HK1230 – 20-3/8" (518 mm); HK1240 – 21-1/2" (546 mm); HK1240K – 22" (557 mm)
Weight	HK1230 – 12.2 lbs (5.5 kg); HK1240 & HK1240K – 13.2 lbs. (6.0 kg)

12-Ton Manual Hydraulic Crimping Tool



- Two-speed ram advances fast and shifts to lower speed to complete the crimp.
- Strong, lightweight fiberglass handles.
- Push button permits dies to be inserted and removed easily.
- The "C" style head has a 1.2" (30 mm) opening for easy placement on connectors.
- Tool is supplied in a durable molded plastic carrying case.
- Accepts Greenlee and industry "U" style dies for 12-ton tools.
- Includes molded carrying case.

CAT. NO.	UPC NO.	DESCRIPTION
HKL1230	01760	12-Ton Hydraulic Crimping Tool, 1.2" (30 mm) opening

Crimping Dies on page 171.

SPECIFICATIONS

Capacity	See crimping tool capacity chart on page 157.
Crimping Force	24,000 lbs (106 kN)
Length	24-1/4" (616 mm)
Weight	14.1 lbs (6.4 kg)

12-Ton Remote-Powered Crimping Heads



RK1230



RK1240



RK1240K



RK1240C

- Three crimping head choices: RK1230 for industry "U" type dies with 1.20" (30 mm) opening, RK1240 for industry "U" type dies with 1.65" (42 mm) opening, and RK1240K for Kearney PH2 type dies.
- New head designs result in lower weight and improved durability – tested to 50,000 crimp cycles.
- Boss included on each crimping head for use with hotsticks.
- Easy to get into tight locations, lightweight makes them excellent choices for hotstick use.
- Single-acting tools that require an external hydraulic pump capable of 10,000 psi (700 bar).
- Equipped with a 3/8" male screw type coupler.
- Capable of crimping a wide range of lugs, C-taps, H-taps and overhead tension sleeves.
- Covered head models have two layers of PVC that total approximately 3/16" (4.8 mm) thick. The outer layer is black and the inner layer is red.
- Includes steel carrying case.
- See page 333 for hydraulic hose and pump selection.

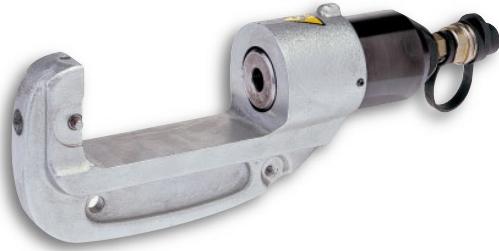
CAT. NO.	UPC NO.	DESCRIPTION
RK1230	05350	12-Ton Remote-Powered Crimping Head, 1.2" (30 mm) opening
RK1230C	07204	12-Ton Remote-Powered Crimping Head, 1.2" (30 mm) opening, PVC covered
RK1240	05351	12-Ton Remote-Powered Crimping Head, 1.65" (42 mm) opening
RK1240C	07205	12-Ton Remote-Powered Crimping Head, 1.65" (42 mm) opening, PVC covered
RK1240K	05352	12-Ton Remote-Powered Crimping Head, Kearney head
RK1240KC	07207	12-Ton Remote-Powered Crimping Head, Kearney head, PVC covered

Crimping Dies on page 171.

SPECIFICATIONS

Capacity	RK1230 & RK1240 – See crimping tool capacity chart on pg. 157; RK1240K – ASCR terminals 1033 kcmil (MCM), ASCR tension fittings 477 kcmil (MCM)
Crimping Force	24,000 lbs (106 kN)
Length	RK1230 – 10-3/4" (273 mm); RK1240 – 11-7/8" (302 mm); RK1240K – 12-1/4" (311 mm)
Weight	RK1230 – 8.7 lbs (3.9 kg); RK1240 & RK1240K – 9.7 lbs. (4.4 kg)
Max. Operating Pressure	10,000 psi (700 bar)

15-Ton Crimping Tool



- Interchangeable adapters permit the use of a wide variety of die types for all common crimping applications.
- Accepts Kearney PH4/PH14 dies without adapters.
- Lightweight.
- Zinc-plated head resists corrosion better than other finishes.
- Hot stick attachment point is standard.
- Operates with most 10,000 psi (700 bar) hydraulic sources.
- Equipped with 3/8" male screw type 10,000 psi (700 bar) coupler.
- Includes steel carrying case.
- See page 333 for hydraulic hose and pump selection.

CAT. NO.	UPC NO.	DESCRIPTION
RK1550	05386	15-Ton Single-Acting Remote-Powered Crimping Tool
48820	48820	Die Adapters – Burndy P dies (Y46), IlSCO ILD-P dies
48788	48788	Die Adapters – T&B 15600 dies, Blackburn 15600 dies
48802	48802	Die Adapters – Greenlee U dies, Burndy U dies, IlSCO ILD dies, T&B 15500 dies, Blackburn 15500 dies
48824	48824	Die Adapters – Kearney PH2/WH2 dies

SPECIFICATIONS

Capacity	Color-Coded copper lugs and splices: #8 to 1000 kcmil (MCM) Color-Coded aluminum lugs and splices: #8 to 1000 kcmil (MCM) For other connector types, see the capacity chart in the Greenlee catalog
Crimping Force at 10,000 psi (700 bar)	30,000 lbs (133 kN)
Length	15" (380 mm);
Width	3" (76 mm)
Height	5-3/8" (135 mm)
Weight	14.1 lbs. (6.4 kg)
Operating Pressure	10,000 psi (700 bar)



Crimping Tool 8-1 AWG



- Small size and lightweight make this an ideal tool for crimping small lugs and splices.
- Easily fits in tool pouches.
- Full-cycle mechanism assures that crimps are complete.
- Jaws can be opened in mid-cycle if necessary to adjust connector.
- Wide grips make crimping easy on the hands.
- UL and cUL classified with Anderson, Blackburn, Burndy, ILSCO, Panduit, Penn-Union, and Thomas & Betts **copper** color-coded code connectors.

SPECIFICATIONS

Capacity	8 AWG - 1 AWG copper color-coded connectors
Length	10" (273 mm)
Weight	1.4 lbs. (0.6 kg)

CAT. NO.	UPC NO.	DESCRIPTION
K111	10763	Crimping Tool

K-Series Crimping Tool 8-1/0 AWG



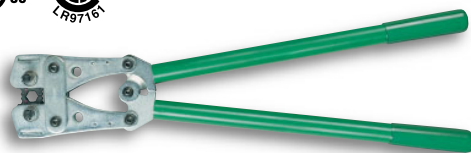
- Crimps smaller copper connectors.
- UL classified and CSA certified with Anderson, Blackburn, Burndy, ILSCO, Panduit, Thomas & Betts and Penn-Union copper connectors.
- Small, lightweight, easy to handle.
- Easy to get in tight locations.
- Color-coded, hexagonal rotating dies.

SPECIFICATIONS

Capacity	8 AWG - 1/0 AWG Copper
Length	15.4" (390 mm)
Weight	2.4 lbs. (1.1 kg)

CAT. NO.	UPC NO.	DESCRIPTION
K05-1GL	02624	Crimping Tool
K05-1SPGL	02625	Crimping Tool, full cycle mechanism

K-Series Crimping Tool – 8-4/0 AWG



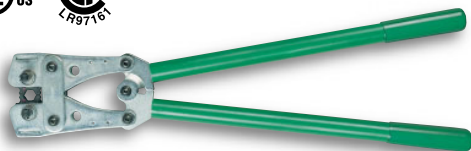
- UL classified and CSA certified with Anderson, Blackburn, Burndy, ILSCO, Panduit, Thomas & Betts and Penn-Union copper connectors.
- Crimps all the popular small to mid-range copper connector sizes.
- Long length results in low handle efforts.
- Color-coded, hexagonal rotating dies.

SPECIFICATIONS

Capacity	8 AWG - 4/0 AWG Copper
Length	25.5" (650 mm)
Weight	6.4 lbs. (2.9 kg)

CAT. NO.	UPC NO.	DESCRIPTION
K09-2GL	02628	Crimping Tool
K09-2SPGL	02629	Crimping Tool, full cycle mechanism

K-Series Crimping Tool 3/0-400



- UL classified and CSA certified with Anderson, Blackburn, Burndy, ILSCO, Panduit, Thomas & Betts and Penn-Union copper connectors.
- Crimps the larger copper connector sizes all the way to 400 kcmil (MCM).
- Color-coded, hexagonal rotating dies.

SPECIFICATIONS

Capacity	3/0 AWG - 400 kcmil (MCM) Copper
Length	25.5" (650 mm)
Weight	6.4 lbs. (2.6 kg)

CAT. NO.	UPC NO.	DESCRIPTION
K09-3GL	02630	Crimping Tool



Gator-Plus™ Battery-Powered Quad-Point Dieless Crimping Tools*



EK06FT



EK06AT

- Utilizes four indentors to make the crimp.
- Two-speed pump advances the ram quickly to start the crimp, reducing crimp completion time. The ram automatically retracts after the crimp is complete.
- Lightweight, featuring an angled pistol grip and a 360° rotating head.
- Flip-top style uses a pull pin to open head for easy removal from the connector.
- Includes two batteries, battery charger, steel carrying case, test gauge and test slugs.
- Choice of a 120 volt, 230 volt, or 12 volt one-hour battery charger.
- U.S. Patent 6,206,663.

CAT. NO.	UPC NO.	DESCRIPTION
EK06AT11	06069	Quad-Point Battery-Powered Crimping Tool, Open Head Dieless, 120 V Charger
EK06AT12	06070	Quad-Point Battery-Powered Crimping Tool, Open Head Dieless, 12 V Charger
EK06AT22	06071	Quad-Point Battery-Powered Crimping Tool, Open Head Dieless, 230 V Charger
EK06ATC11	06203	Quad-Point Battery-Powered Crimping Tool, Open Rubber Covered Head Dieless, 120 V Charger
EK06ATC12	06204	Quad-Point Battery-Powered Crimping Tool, Open Rubber Covered Head Dieless, 12 V Charger
EK06ATC22	06206	Quad-Point Battery-Powered Crimping Tool, Open Rubber Covered Head Dieless, 230 V Charger
EK06FT11	06072	Quad-Point Battery-Powered Crimping Tool, Flip-Top Head Dieless, 120 V Charger
EK06FT12	06073	Quad-Point Battery-Powered Crimping Tool, Flip-Top Head Dieless, 12 V Charger
EK06FT22	06074	Quad-Point Battery-Powered Crimping Tool, Flip-Top Head Dieless, 230 V Charger

SPECIFICATIONS

Capacity

See crimping tool capacity chart on page 157.

Length EK60AT – 14 in. (355 mm), EK60FT – 14-7/8 in. (378 mm)

Weight EK60AT – 11.1 lbs. (5.0 kg), EK60FT – 10.8 lbs. (4.9 kg)

Battery Voltage 12V; **Battery Charge Time** 1 hour

*FT tools are UL and cUL classified with #4AWG – 750 kcmil (MCM) copper color-coded connectors and #6AWG – 750 kcmil (MCM) aluminum color-coded connectors of the following brands: Anderson, Blackburn, FCI Burndy, IlSCO, Panduit, Penn-Union, and Thomas & Betts.

AT tools are UL and cUL classified with #4 – 500 kcmil (MCM) copper color-coded connectors ...of the following brands: Anderson, Blackburn, FCI Burndy, ILSCO, Panduit, Penn-Union, & Thomas & Betts.



Gator-Plus™ Quad-Point Dieless Crimping Tools*



- Operates directly from 120 volt or 230 volt 50 Hz electrical outlets. No need to charge batteries or worry about running out of power.
- Equipped with 15 foot (5 m) cord. Can be used with extension cords.
- 6.2-ton capacity. Utilizes four indentors to make the crimp.
- Two-speed pump advances the ram quickly to start the crimp, reducing crimp completion time. The ram automatically retracts after the crimp is complete.
- Lightweight, featuring an angled pistol grip and a 360° rotating head.
- Flip-top style uses a pull pin to open head for easy removal from the connector.
- Includes steel carrying case, test gauge and test slugs.
- U.S. Patent 6,206,663.

CAT. NO.	UPC NO.	DESCRIPTION
CK06AT11	01377	Corded Quad-Point Crimping Tool, Open Head, 120 V
CK06AT22	01378	Corded Quad-Point Crimping Tool, Open Head, 230 V
CK06FT11	01380	Corded Quad-Point Crimping Tool, Flip-Top Head, 120 V
CK06FT22	01381	Corded Quad-Point Crimping Tool, Flip-Top Head, 230 V

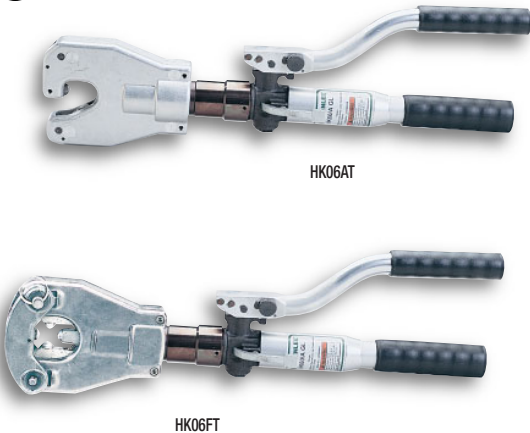
SPECIFICATIONS

Capacity	See crimping tool capacity chart on page 157.
Crimping Force	6.2 tons (55 kN)
Length	CK60AT – 14 in. (355 mm), CK60FT – 14-7/8 in. (378 mm)
Weight	CK60AT – 11.1 lbs. (5.0 kg), CK60FT – 10.8 lbs. (4.9 kg)
Operating Voltage	CK60AT11 – 120 volts, CK60AT22 – 230 volts CK60ATC11 – 120 volts, CK60ATC22 – 230 volts CK60FT11 – 120 volts, CK60FT22 – 230 volts

*FT tools are UL and cUL classified with #4AWG – 750 kcmil (MCM) copper color-coded connectors and #6AWG – 750 kcmil (MCM) aluminum color-coded connectors of the following brands: Anderson, Blackburn, FCI Burndy, IlSCO, Panduit, Penn-Union, and Thomas & Betts.

AT tools are UL and cUL classified with #4 – 500 kcmil (MCM) copper color-coded connectors ...of the following brands: Anderson, Blackburn, FCI Burndy, ILSCO, Panduit, Penn-Union, & Thomas & Betts.

Manual Hydraulic Quad-Point Dieless Crimping Tools*



- Utilize four indentors to make the crimp.
- Two-speed pump advances the ram quickly to start the crimp, reducing crimp completion time. The ram automatically retracts after the crimp is complete.
- Flip-top style uses a pull pin to open head for easy removal from the connector.
- Compact, featuring a 360° rotating head.
- Includes steel carrying case, test gauge and test slugs.
- U.S. Patent 6,206,663.

CAT. NO.	UPC NO.	DESCRIPTION
HK06AT	06065	Hydraulic Quad-Point Crimping Tool, Open Head Dieless
HK06ATC	06201	Hydraulic Quad-Point Crimping Tool, Open Rubber Covered Head Dieless
HK06FT	06196	Hydraulic Quad-Point Crimping Tool, Flip-Top Dieless

SPECIFICATIONS

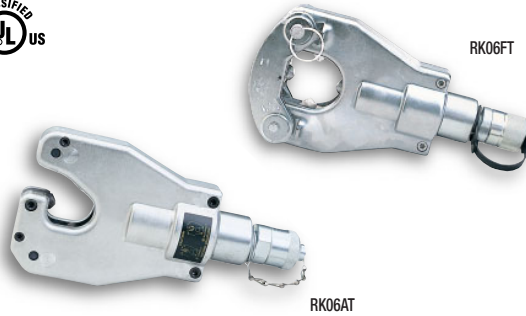
Capacities	See crimping tool capacity chart on page 157.
Length	HK60AT – 20-3/4 in. (525 mm), HK60FT – 21-1/16 in. (535 mm)
Weight	9.0 lbs. (4.1 kg)

*FT tools are UL and cUL classified with #4AWG – 750 kcmil (MCM) copper color-coded connectors and #6AWG – 750 kcmil (MCM) aluminum color-coded connectors of the following brands: Anderson, Blackburn, FCI Burndy, IlSCO, Panduit, Penn-Union, and Thomas & Betts.

AT tools are UL and cUL classified with #4 – 500 kcmil (MCM) copper color-coded connectors ...of the following brands: Anderson, Blackburn, FCI Burndy, ILSCO, Panduit, Penn-Union, & Thomas & Betts.



Quad-Point Dieless Remote Powered Crimping Heads*



- Utilize four indentors to make the crimp.
- Operates from 10,000 psi (700 bar) hydraulic pumping sources.
- Small and lightweight for difficult to reach locations.
- Equipped with 3/8 in. male screw-type couplers.
- Flip-top style uses a pull pin to open head for easy removal from the connector.
- Includes steel carrying case, test gauge and test slugs.
- See page 301 for hose and pump selection.

CAT. NO.	UPC NO.	DESCRIPTION
RK06AT	06066	Remote Powered Quad-Point Crimping Tool, Open Head Dieless
RK06FT	06197	Remote Powered Quad-Point Crimping Tool, Flip-Top Head Dieless

SPECIFICATIONS

Capacities	See crimping tool capacity chart on page 157
Crimping Force	6.2 tons (55 kN)
Length	RK06AT – 10 in. (254 mm), RK06FT – 10-1/2 in. (267 mm)
Weight	6.2 lbs. (2.8 kg)

*FT tools are UL and cUL classified with #4AWG – 750 kcmil (MCM) copper color-coded connectors and #6AWG – 750 kcmil (MCM) aluminum color-coded connectors of the following brands: Anderson, Blackburn, FCI Burndy, IlSCO, Panduit, Penn-Union, and Thomas & Betts.

AT tools are UL and cUL classified with #4 – 500 kcmil (MCM) copper color-coded connectors ...of the following brands: Anderson, Blackburn, FCI Burndy, ILSCO, Panduit, Penn-Union, & Thomas & Betts.

Indentor Crimping Tool



- Crimps lugs and splices on color-coded copper connectors or battery connectors. Not for use on aluminum cable.
- Simple screw adjustment for connector size.
- Forged handle for durability.

SPECIFICATIONS

CAT. NO.	UPC NO.	DESCRIPTION
1980	35019	Indentor Crimping Tool

Capacity	8 AWG - 250 kcmil (MCM) color-coded copper connectors or battery connectors
Length	22-3/8" (568 mm)
Weight	6.8 lbs. (3.1 kg)

Dieless Crimping Tool to 500 kcmil (MCM)



- Dieless crimping head, no dies to lose or replace.
- Patented pressure system automatically changes crimping force for each connector size and type. Eliminates errors.
- Seven indent profile requires fewer crimps per connector.
- Automatic two speed pump for rapid advance. Minimizes crimping time and number of strokes.
- 8-1/2 ton (75.6 kN) maximum crimping force.
- Swivel head rotates 180° for maximum flexibility.
- Includes Pressure Test Kit and steel carrying case
- Not for use with "C" and "H" taps.

CAT. NO.	UPC NO.	DESCRIPTION
1989	35955	Dieless Crimping Tool to 500 kcmil (MCM)
36202	36202	Replacement Pressure Test Kit includes 30 Test Slugs and Gauge

SPECIFICATIONS

Copper – 4 AWG - 500 kcmil (MCM)
Aluminum – 6 AWG - 500 kcmil (MCM) (see chart on page 157)
Length 22-1/2" (572 mm); Weight 14.75 lbs. (6.7 kg)



Dieless Crimping Tool to 1000 kcmil (MCM)



- Dieless crimping head, no dies to lose or replace.
- Patented pressure system automatically changes crimping force for each connector size/type. Eliminates errors.
- Seven indent profile requires fewer crimps per connector.
- Automatic two speed pump for rapid advance.
- 15 ton (133.4 kN) maximum crimping force.
- Swivel head rotates 180° for maximum flexibility.
- Hinged head for easy connector loading and unloading.
- Includes Pressure Test Kit and steel carrying case.
- Not for use with "C" and "H" taps.

CAT. NO.	UPC NO.	DESCRIPTION
1990	32489	Dieless Crimping Tool to 1000 kcmil (MCM)
32891	32891	Replacement Pressure Test Kit includes 30 Test Slugs and Gauge

SPECIFICATIONS	
Capacity	Copper – #4 AWG - 1000 kcmil (MCM) Aluminum – # 6 AWG - 1000 kcmil (MCM) (see chart on page 147) For use with connectors up to a maximum of 1.815" (46.10 mm) diameter
Length	26.5 in. (673 mm); Weight 16.5 lbs. (7.5 kg)

Utility Dieless Crimping Tool



- Self-contained hydraulic crimper/press designed to crimp compression sleeves and lugs in underground applications.
- Dieless crimping head, no dies to lose or replace.
- Automatic pressure setting, easy to use.
- Two speed pump for rapid ram advance, 15 ton (133.4 kN) maximum crimping force.
- Hinged head opens for easy loading and unloading.
- Head rotates 180°.
- Includes Pressure Test Kit and steel carrying case.

CAT. NO.	UPC NO.	DESCRIPTION
44999	44999	Utility Dieless Crimping Tool
32891	32891	Replacement Pressure Test Kit includes 30 Test Slugs and Gauge

SPECIFICATIONS	
Capacity	Copper – 1/0 - 1000 kcmil (MCM) Aluminum – 1/0 - 1000 kcmil (MCM) For use with connectors up to a maximum of 1.895" (48 mm) diameter
Weight	16.5 lbs. (7.5 kg)

Dieless Crimper Connector Brand Uses, UL Classified & CSA Certified *

CONNECTOR BRAND	GREENLEE CRIMPER NO.	DUAL RATED ALUMINUM SLEEVES	DUAL RATED ALUMINUM LUGS	COPPER SLEEVES	COPPER LUGS	ALUMINUM PIN CONNECTORS	ALUMINUM OFFSET CONNECTORS	COPPER PIGTAIL ADAPTERS
ANDERSON	1989 & 1990	VACS	VACL	VHS/VHSS	VHCL	CEP	CEPO	—
BLACKBURN®	1989 & 1990	ASP	ATL	CSP/CU	CTL-2, CTL CTL-L/LCN	—	—	—
BURNDY™	1989 & 1990	YS-A	YA-A YA-ATN	YS/YS-L	YA/YA-L/YA-2L YA-2LN/YA-2N YA-L-TC/YA-L-2TC	AYP	AYPO	—
ILSCO	1989	AS	ACL/ACN 2ACL/2ACN	CT/CTL	CRA/CRB CRA-L/CRB-L CRA-2L/CRB-2L	ACM	ACO	—
	1990	AS	ACL/ACN 2ACL/2ACN	CT/CTL	CRA/CRB CRA-L/CRB-L CRA-2L/CRB-2L	ACM #6 AWG-1000 kcmil (MCM) AL	ACO 2/0 AWG-1000 kcmil (MCM) AL	CPM
T&B•	1989	60507-60571	60106-60172 60230-60273	54506-54518 54806-54818	54106-54187 54206-54287 54906-54918 54854-54876	—	—	—
	1990	60507-60584	60106-60184 60230-60284	54506-54582 54806-54882	54106-54128 54206-54228 54906-54928 54854-54882	—	—	—
TELEDYNE PENN-UNION	1990	PIK	BLUA	BCU BBCU	BLU BBLU	TP	TPO	—
CABLE SIZE								
	1989	6 AWG 500 kcmil (MCM) Copper and Aluminum		4 AWG-500 kcmil (MCM) Copper		6 AWG-500 kcmil (MCM) Aluminum	2/0 AWG-500 kcmil (MCM) Aluminum	6 AWG-500 kcmil (MCM) Aluminum
	1990	6 AWG 1000 kcmil (MCM) Copper or Aluminum		4 AWG-1000 kcmil (MCM) Copper		6 AWG-750 kcmil (MCM) Aluminum	2/0 AWG-750 kcmil (MCM) Aluminum	

- When used with standard, concentric, compressed or compact stranded copper and aluminum conductors.
- Connector size within rated capacity of individual crimper.

Blackburn® is a registered trademark of Thomas & Betts.



Crimping Dies for 6-Ton Tools



All dies on this page for use with ECCX, EK22GL, CCCX, CK22GL, HCCX, and RCCX tools.

6-TON CRIMPING KITS*

CAT. NO.	UPC NO.	DESCRIPTION
K22S1GL	03078	Die Kit for #8-600 Copper Connectors – Includes all copper die sets listed below and carrying case
KD06AL	01631	Die Kit for #8-350 Aluminum Connectors – Includes all die sets listed below and carrying case

DIES FOR CRIMPING COLOR-CODED COPPER & ALUMINUM LUGS & SPLICES* (Require UA22 adapter when used with ECCX, CCCX, HCCX, & RCCX tools)

22 SERIES CRIMPING DIES

CABLE SIZE	ALUMINUM			COPPER		
	CAT. NO.	UPC NO.	COLOR	CAT. NO.	UPC NO.	COLOR
8 AWG	KA22-8	06744	Blue	K22-0	03079	Red
6 AWG	KA22-6	06745	Gray	K22-1	03080	Blue
4 AWG	KA22-4	06746	Green	K22-2	03081	Gray
2 AWG	KA22-2	06747	Pink	K22-3	03082	Brown
1 AWG	KA22-1	06749	Gold	K22-31	03083	Green
1/0 AWG	KA22-1/0	06750	Tan	K22-4	03084	Pink
2/0 AWG	KA22-2/0	06751	Olive	K22-5	03085	Black
3/0 AWG	KA22-3/0	06752	Ruby	K22-6	03086	Orange
4/0 AWG	KA22-4/0	06753	White	K22-7	03087	Purple
250 kcmil (MCM)	KA22-250	06754	Red	K22-8	03088	Yellow
300 kcmil (MCM)	KA22-300	06755	Blue	K22-9	03089	White
350 kcmil (MCM)	KA22-350	06756	Brown	K22-10	03090	Red
400 kcmil (MCM)	—	—	—	K22-11	03091	Blue
500 kcmil (MCM)	—	—	—	K22-12	03092	Brown
600 kcmil (MCM)	—	—	—	K22-13	03093	Green



DIES FOR USE WITH SERVICE ENTRANCE CONNECTORS, C-TAPS, H-TAPS, OVERHEAD AND UNDERGROUND CONNECTORS (Require UAW adapter when used with ECCX, CCCX, HCCX, & RCCX tools)

"W"-STYLE DIES

CAT. NO.	UPC NO.	BURNDY NO.	CAT. NO.	UPC NO.	BURNDY NO.
KD6-10	10165	W-BG	KD6-19	10174	W-243
KD6-11	10166	W-0	KD6-20	10175	W-247
KD6-12	10167	W-C	KD6-21	10176	W-249
KD6-14	10169	W-161	KD6-22	10177	W-164
KD6-15	10170	W-162	KD6-24	10179	W-237
KD6-16	10171	W-163	KD6-25	10180	W-239
KD6-18	10173	W-166	KD6-27	10182	W-28K



*Note: Connections are UL classified for copper and aluminum, CSA certified for copper and UL classified for aluminum when used with Greenlee tools on Anderson®, Blackburn®, FCI Burndy®, ILSCO®, Panduit®, Thomas & Betts® and Penn-Union® color-coded lugs and splices.

Crimping Dies for 12-Ton Tools



All dies on this page for use with EK1230, EK1240, HK1230, HK1240, RK1230, RK1240, HKL1230 tools and RK1550 equipped with 48802 die adapter.

12-TON CRIMPING KITS

"U" STYLE DIE KITS

CAT. NO.	UPC NO.	DESCRIPTION
KD12CU	10260	Die Kit for #6-750 Copper Connectors – Includes all copper die sets below except 07378.
KD12AL	10261	Die Kit for #6-750 Aluminum Connectors – Includes all aluminum die sets below except 35776.

DIES FOR CRIMPING COLOR-CODED COPPER & ALUMINUM LUGS & SPLICES

"U" STYLE DIES

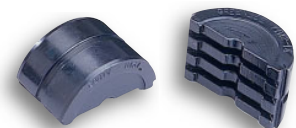
CABLE SIZE	ALUMINUM			COPPER		
	GREENLEE UPC NO.	BURNDY NO.	COLOR	GREENLEE UPC NO.	BURNDY NO.	COLOR
8 AWG	35776	U8CABT	Blue	07378	U8CRT	Red
6 AWG	35777	U6CABT	Gray	35776	U8CABT	Blue
4 AWG	35779	U4CABT	Green	35777	U6CABT	Gray
2 AWG	35780	U2CABT	Pink	35778	U2CRT	Brown
1 AWG	35791	U1CART	Gold	35779	U4CABT	Green
1/0 AWG	35792	U25ART	Tan	35780	U2CABT	Pink
2/0 AWG	35793	U26ART	Olive	35781	U26RT	Black
3/0 AWG	35794	U27ART	Ruby	35782	U27RT	Orange
4/0 AWG	35785	U28ART	White	35783	U28RT	Purple
250 kcmil (MCM)	35786	U29ART	Red	35784	U29RT	Yellow
300 kcmil (MCM)	35787	U30ART	Blue	35785	U28ART	White
350 kcmil (MCM)	35788	U31ART	Brown	35786	U29ART	Red
400 kcmil (MCM)	35789	U32ART	Green	35787	U30ART	Blue
500 kcmil (MCM)	35795	U34ART	Pink	35788	U31ART	Brown
600 kcmil (MCM)	35790	U36ART	Black	35789	U32ART	Green
750 kcmil (MCM)	35796	U39ART-2	Yellow	07379	U39RT	Black



DIES FOR USE WITH SERVICE ENTRANCE CONNECTORS, C-TAPS, H-TAPS, OVERHEAD AND UNDERGROUND CONNECTORS

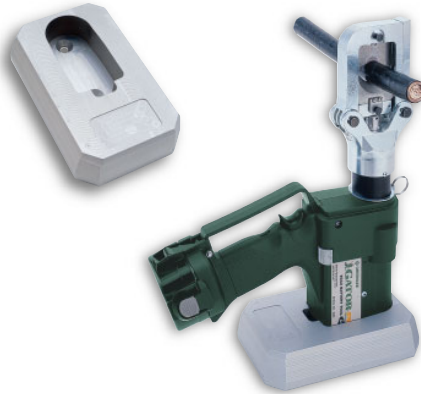
ADDITIONAL "U"-STYLE DIES

CAT. NO.	UPC NO.	BURNDY NO.	CAT. NO.	UPC NO.	BURNDY NO.
KD12-10	10188	U-BG	KD12-21	10199	U-249
KD12-11	10189	U-O	KD12-30	10200	U-D3
KD12-12	10190	U-C	KD12-31	10201	U-E
KD12-14	10192	U-161	KD12-32	10202	U-F
KD12-15	10193	U-162	KD12-35	10205	U-238
KD12-16	10194	U-163	KD12-36	10206	U-654
KD12-17	10195	U-165	KD12-37	10207	U-655
KD12-18	10196	U-166	KD12-38	10208	U-658
KD12-19	10197	U-243	KD12-39	10209	U-659
KD12-20	10198	U-247			





EKST Battery Tool Stand



- Holds battery tools in a good position for workbench operation.
- Tool is held firmly, but is easily removed for hand-held use.
- Holes in bottom allow the test stand to be permanently attached to a workbench.
- For use with all Greenlee battery-powered tools (except ES750, EK210, and EK410).

CAT. NO.	UPC NO.	DESCRIPTION
EKST	08082	Battery Tool Stand

Crimping Die Carrying Case



- Holds 15 K22, KA22, or "U" style crimping die sets.

CAT. NO.	UPC NO.	DESCRIPTION
01082	01082	Crimping Die Carrying Case (dies not included)

Crimping Tool Load Cell



- Test gauge measures the force output of Greenlee 1230 and 1240 crimping tools.
- Includes test gauge and blank die set.

CAT. NO.	UPC NO.	DESCRIPTION
35887	35887	Crimping Tool Load Cell—12 Ton

Crimping Tool Test Meter



- Electronically measures the force output of crimping tools.
- Data can be transferred to computer files to develop tool histories.
- To take measurements, one TC1KIT, one tool adapter, and one sensor are required.
- TC1 is battery powered and can be used in remote locations.
- Includes TC1 measuring unit, 120 volt battery charger, carrying case.

CAT. NO.	UPC NO.	DESCRIPTION
TC1KIT	01340	TC1 Unit
MA4	02086	Adapter for EK410
MA22	06576	Adapter for EK22GL, CK22GL, CCX
MAVP	01341	Adapter for Quad-Point
MA120	06577	Adapter for 1230, 1240
TF70	06574	Sensor for EK410, EK22GL, CCX, Quad-Point
TF130	06575	Sensor for 1230, 1240

ADAPTER AND SENSING UNIT CHART

CRIMPING TOOL	ADAPTER	SENSOR
EK410	MA4	TF70
EK22GL, CK22GL, All CCX Tools	MA22	TF70
All Quad-Point Tools	MAVP	TF70
All 1230 and 1240 Tools	MA120	TF130

AC Adapters for Battery-Powered Tools



- Operates all Greenlee battery-powered tools except the ES750, EK210, and EK410.
- Easily converts Greenlee battery-powered tools to corded tools.
- Same physical size and shape as Greenlee batteries providing unlimited run-time without additional weight or bulk.
- Long 16.5 foot cord allows mobility. Can also be used with an extension cord.
- Provides the same power as a battery to the tools for consistent operating performance.

CAT. NO.	UPC NO.	DESCRIPTION
EAC120	01675	AC Adapter, 120V
EAC230	01680	AC Adapter, 230V

SPECIFICATIONS

EAC120		EAC230	
Input	120 V AC 60 Hz 150W	Input	230 V AC 50 Hz 150W
Output	12 V DC 6.5A	Output	12 V DC 6.5A
Weight	1.6 lb (0.7 kg)	Weight	1.6 lb (0.7 kg)



Competitive Die Compatibility

TOOL TYPE	GREENLEE	BURNDY	T & B	ILSCO	HUSKIE	PANDUIT	BLACKBURN	KEARNEY	PENN-UNION
EK22GL, CK22GL	K22, KA22, KD6	W, X	—	ND	HT58	CD-2001	—	—	—
CCX	K22¹, KA22¹, KD6²	W², X²	6 TON³	ND²	HT³, HT58²	CD-2001²	BY³	O³	—
1230	"U" STYLE, KD12	U	15500 SERIES	ILD	HT41	CD-920	B, H	—	T
1240	"U" STYLE, KD12	U	15500 SERIES	ILD	HT41	CD-920	B, H	—	T
1240K	—	—	—	—	HTK	—	—	PH2	—
1550	—	P⁴, U⁵	15600 SERIES⁶, 15500 SERIES⁵	ILD-P⁴, ILD⁵	HT61⁴, HT41⁵	CD-940⁴, CD-920⁵	15600 SERIES⁶, B⁵, H⁵	PH2⁷	—

Notes: **BOLD** indicates that use of the proper die adapter is needed.¹ Use UA22 die adapters³ Use UAK die adapters⁵ Use 48802 die adapters⁷ Use 48824 die adapters² Use UAW die adapters⁴ Use 48820 die adapters⁶ Use 48788 die adapters

Crimping Die Cross Reference

CCX, EK22GL, CK22GL – COPPER COLOR-CODED LUGS AND SPLICES

CABLE SIZE	COLOR CODE	GREENLEE ¹	BURNDY ²	T & B ³	ILSCO ²	HUSKIE ²	PANDUIT ²	BLACKBURN ³
8 AWG	Red	K22-0	W8CVT W8CRT X8CRT	6TON21			CD-2001-8	BY15C
6 AWG	Blue	K22-1	W5CVT W5CRT X5CRT X8CART	6TON24			CD-2001-6	BY17C
5 AWG	Blue	NA	W5CVT W5CRT X5CRT					
4 AWG	Gray	K22-2	W4CVT W4CRT X4CRT	6TON29			CD-2001-4	BY19C
3 AWG	White	NA	W3CRT					
2 AWG	Brown	K22-3	W2CVT W2CRT X2CRT	6TON33			CD-2001-2	BY21C
1 AWG	Green	K22-31	W1CVT X1 CRT-1 W1 CRT-1	6TON37			CD-2001-1	BY53C
1/0 AWG	Pink	K22-4	W25VT W25RT X25RT	6TON42			CD-2001-1/0	BY23C
2/0 AWG	Black	K22-5	W26VT W26RT X26RT	6TON45			CD-2001-2/0	BY28C
3/0 AWG	Orange	K22-6	W27VT W27RT X27RT	6TON50			CD-2001-3/0	BY25C
4/0 AWG	Purple	K22-7	W28VT W28RT X28RT	6TON54			CD-2001-4/0	BY31C
250 kcmil (MCM)	Yellow	K22-8	W29VT W29RT X29RT	6TON62			CD-2001-250	BY27C
300 kcmil (MCM)	White	K22-9	W30VT W30RT	6TON66			CD-2001-300	BY35C
350 kcmil (MCM)	Red	K22-10	W31VT W31RT	6TON71			CD-2001-350	BY37C
400 kcmil (MCM)	Blue	K22-11	W32VT W32RT	6TON76			CD-2001-400	
500 kcmil (MCM)	Brown	K22-12	W34VT W34RT	6TON87			CD-2001-500	
600 kcmil (MCM)	Green	K22-13						

Notes for 6-ton dies:

¹ Can be used with 22 Series and CCX tools. Use UA22 die adapters with CCX. Use without adapters with 22 Series.² Can be used with 22 Series and CCX tools. Use UAW die adapters with CCX. Use with W die adapters with 22 Series.³ Can be used with CCX tools only. Cannot be used with 22 Series tools. Use UAK die adapters with CCX.



Crimping Die Cross Reference

ALL 1230 & 1240 TOOLS* – COPPER COLOR-CODED LUGS AND SPLICES

CABLE SIZE	COLOR CODE	GREENLEE	BURNDY	T & B	ILSCO	HUSKIE	PANDUIT	BLACKBURN	PENN-UNION
8 AWG	Red	07378	U8CRT	15520	ILD-1		CD-920-8	B71CH	
6 AWG	Blue	35776	U5CRT U8CABT	15522	ILD-2	HT41AT	CD-920-6	B73CH	T-7/374
5 AWG	Blue		U5CRT						
4 AWG	Gray	35777	U4CRT U6CABT	15527	ILD-3	HT41AU	CD-920-4	B74CH	T-8/346
3 AWG	White	NA	U3CRT						
2 AWG	Brown	35778	U2CRT	15528	ILD-4	HT41AW	CD-920-2	B75CH	T-9
1 AWG	Green	35779	U1CRT 4UCABT	15513	ILD-4	HT41AX	CD-920-1	B05CH	T-10
1/0 AWG	Pink	35780	U25RT U2CABT	15508	ILD-5	HT41AY	CD-920-1/0	B06CHI	T-11/375
2/0 AWG	Black	35781	U26RT	15526	ILD-6	HT41AZ	CD-920-2/0	B72CH	T-12/348
3/0 AWG	Orange	35782	U27RT	15530	ILD-9	HT41BA	CD-920-3/0	B08CH	T-13
4/0 AWG	Purple	35783	U28RT	15511	ILD-10	HT41BC	CD-920-4/0	B09CH	T-14
250 kcmil (MCM)	Yellow	35784	U29RT	15510	ILD-11	HT41BE	CD-920-250	B26CH	T-15
300 kcmil (MCM)	White	35785	U30RT U28ART	15534	ILD-12	HT41BF	CD-920-300	B10CH	T-16
350 kcmil (MCM)	Red	35786	U31RT U29ART	15512	ILD-13	HT41BJ	CD-920-350	B11CH	T-17
400 kcmil (MCM)	Blue	35787	U32RT U30ART	15512	ILD-14	HT41BK	CD-920-400	B11CH	T-18/324
500 kcmil (MCM)	Brown	35788	U34RT U31ART	15506	ILD-15	HT41BL	CD-920-500	B12CH	T-19/470
600 kcmil (MCM)	Green	35789	U36RT U32ART		ILD-16	HT41BM	CD920-600	B36CH	T-20/299
700 kcmil (MCM)	Pink	NA	U38RT	15505	ILD-16				T-20/299
750 kcmil (MCM)	Black	07379	U39RT	15515	ILD-17	HT41BP	CD-920-750	B29CH	T-22/472

Notes for all 12-ton dies: * All 12-ton dies shown can be used with all 1230 and 1240 Greenlee tools up to the capacity limits of the tool.



Crimping Die Cross Reference

CCX, EK22GL, CK22GL – ALUMINUM COLOR-CODED LUGS AND SPLICES

CABLE SIZE	COLOR CODE	GREENLEE ¹	BURNDY ²	T & B ³	ILSCO ²	HUSKIE ²	PANDUIT ²	BLACKBURN ³
8 AWG	Blue	KA22-8	X8CART	6TON24				BY17C
6 AWG	Gray	KA-22	X6CART	6TON29			CD-2001-4	BY19C
4 AWG	Green	KA22-4	X4CART	6TON37			CD-2001-1	BY53C
2 AWG	Pink	KA22-2	X2CART	6TON42			CD-2001-1/0	BY23C
1 AWG	Gold	KA22-1	X1CART	6TON45			CD-2001-2/0	BY24C
1/0 AWG	Tan	KA22-1/0	X25ART	6TON50			CD-2001-3/0	BY25C
2/0 AWG	Olive	KA22-2/0	X26ART	6TON54			CD-2001-4/0	BY31C
3/0 AWG	Ruby	KA22-3/0	X27ART	6TON60			CD-2001-250	BY32C
4/0 AWG	White	KA22-4/0	X28ART	6TON66			CD-2001-300	BY35C
250 kcmil (MCM)	Red	KA22-250		6TON71			CD-2001-350	BY37C
300 kcmil (MCM)	Blue	KA22-300		6TON76			CD-2001-400	BY35C
350 kcmil (MCM)	Brown	KA22-350		6TON87				BY37C

Notes for 6-ton dies:

¹ Can be used with 22 Series and CCX tools. Use UA22 die adapters with CCX. Use without adapters with 22 Series.² Can be used with 22 Series and CCX tools. Use UAW die adapters with CCX. Use with W die adapters with 22 Series.³ Can be used with CCX tools only. Cannot be used with 22 Series tools. Use UAK die adapters with CCX.

Crimping Die Cross Reference

ALL 1230 & 1240 TOOLS* – ALUMINUM COLOR-CODED LUGS AND SPLICES

CABLE SIZE	COLOR CODE	GREENLEE	BURNDY	T & B	ILSCO	HUSKIE	PANDUIT	BLACKBURN	PENN-UNION
8 AWG	Blue	35776	U8CABT	15522	ILD-2	HT41GL		B73CH	T-7/374
6 AWG	Gray	35777	U6CABT	15527	ILD-3	HT41GE	CD-920-4	B74CH	T-8/346
4 AWG	Green	35779	U4CABTQ	15513	ILD-4	HT41GM	CD-920-1	B05CH	T-11/375
2 AWG	Pink	35780	U2CABT	15508	ILD-7	HT41GF	CD-920-1/0	B06CHI	T-12/348
1 AWG	Gold	35791	U1CART	15526	ILD-7		CD-920-2/0	B06CHI	T-471
1/0 AWG	Tan	35792	U25ART	15530	ILD-8	HT41EX	CD-920-3/0	B06CH	T-296
2/0 AWG	Olive	35793	U26ART	15511	ILD-10	HT41EY	CD-920-4/0	B09CH	T-297
3/0 AWG	Ruby	35794	U27ART	15532	ILD-10	HT41GW	CD-920-250	B26CH	T-467
4/0 AWG	White	35785	U28ART	15534	ILD-12	HT41EZ	CD-920-300	B10CHI	T-298
250 kcmil (MCM)	Red	35786	U29ART	15514	ILD-13	HT41FW	CD-920-350	B11CH	T-18/324
300 kcmil (MCM)	Blue	35787	U30ART	15512	ILD-14	HT41GZ	CD-920-400	B11CH	T-19/470
350 kcmil (MCM)	Brown	35788	U31ART	15506	ILD-14	HT41FA	CD-920-500	B12CHI	T-20/299
400 kcmil (MCM)	Green	35789	U32ART	15536	ILD-16	HT41HH	CD-920-600	B36CH	T-22/472
500 kcmil (MCM)	Pink	35795	U34ART	15505	ILD-16A	HT41FB	CD-920-500A	B76CH	T-300
600 kcmil (MCM)	Black	35790	U36ART	15515	ILD-17	HT41HG	CD920-750		T-24/473
700 kcmil (MCM)	Yellow		U39ART		ILD-17	HT41IJ			
750 kcmil (MCM)	Yellow	35796	U39ART	15504	ILD-18	HT41IJ			

Notes for all 12-ton dies: * All 12-ton dies shown can be used with all 1230 and 1240 Greenlee tools up to the capacity limits of the tool.

Crimping Die Cross Reference

CCX, EK22GL, CK22GL – COPPER C-TAPS FOR COPPER CABLES

RUN	TAP	GREENLEE ¹	BURNDY ²	T & B ³	ILSCO ²	HUSKIE ²	PANDUIT ²	BLACKBURN ³
10 AWG	10AWG		W238			HT58DG		
8 AWG	8 AWG	KD6-15	W162			HT58BZ		BY21
4-6 AWG	8 AWG	KD6-10	WBG		ND-BG	HT58G	CD-2001-BG	BY31
4-6 AWG	6 AWG	KD6-10	WBG		ND-BG	HT58G	CD-2001-BG	BY31
4-6 AWG	4 AWG	KD6-10	WBG		ND-BG	HT58G	CD-2001-BG	BY31
2-3 AWG	4-8 AWG	KD6-12	WC		ND-C	HT58J	CD-2001-C	BY33
2-3 AWG	2-3 AWG	KD6-12	WC		ND-C	HT58J	CD-2001-C	BY33
1/0-2/0 AWG	8-2 AWG	KD6-11	WO			HT58AK		OJB
1/0-2/0 AWG	1/0-2/0 AWG	KD6-11	WO			HT58AK		OJB
3/0-4/0 AWG	6-2 AWG	D3 (w/tool)						DBL
3/0-4/0 AWG	1/0-2/0 AWG	D3 (w/tool)						
3/0-4/0 AWG	3/0-4/0 AWG	D3 (w/tool)						

Notes for 6-ton dies:

¹ Can be used with 22 Series and CCX tools. Use UA22 die adapters with CCX. Use without adapters with 22 Series.

² Can be used with 22 Series and CCX tools. Use UAW die adapters with CCX. Use with W die adapters with 22 Series.

³ Can be used with CCX tools only. Cannot be used with 22 Series tools. Use UAK die adapters with CCX.

Crimping Die Cross Reference

ALL 1230 & 1240 TOOLS* – COPPER C-TAPS FOR COPPER CABLES

RUN	TAP	GREENLEE	BURNDY	T & B	ILSCO	HUSKIE	PANDUIT	BLACKBURN	PENN-UNION
10 AWG	10 AWG	KD12-35	U238			HT41DG			
8 AWG	8 AWG	KD12-15	U162			HT41BZ		B71AH	
4-6 AWG	8 AWG	KD12-10	UBG			HT41G	CD-920-BG	B58CS	T-BG
4-6 AWG	6 AWG	KD12-10	UBG			HT41G	CD-920-BG	B58CS	T-BG
4-6 AWG	4 AWG	KD12-10	UBG			HT41G	CD-920-BG	B58CS	T-BG
2-3 AWG	4-8 AWG	KD12-12	UC		ILD-C	HT41J	CD-920-C	HKBC	
2-3 AWG	2-3 AWG	KD12-12	UC		ILD-C	HT41J	CD-920-C	HKBC	
1/0-2/0 AWG	8-2 AWG	KD12-11	UO		ILD-O	HT41AK		HO	T-O
1/0-2/0 AWG	1/0-2/0 AWG	KD12-11	UO		ILD-O	HT41AK		HO	T-O
3/0-4/0 AWG	6-2 AWG	KD12-30	UD3		ILD-D3	HT41X	CD-920-D3	HD	T-D3
3/0-4/0 AWG	1/0-2/0 AWG	KD12-30	UD3		ILD-D3	HT41X	CD-920-D3	HD	T-D3
3/0-4/0 AWG	3/0-4/0 AWG	KD12-30	UD3		ILD-D3	HT41X	CD-920-D3	HD	T-D3

Notes for all 12-ton dies: * All 12-ton dies shown can be used with all 1230 and 1240 Greenlee tools up to the capacity limits of the tool.



Ratchet Cable Bender



- Simplifies and speeds cable installation.
- 10" (254 mm) ratchet extension is furnished to simplify bending in deep enclosures.
- Includes ratchet wrench, L-wrench, ratchet extension, bending shoe assembly and storage box.

SPECIFICATIONS

Capacity Up through 500 kcmil (MCM) (240 mm²), 600 volt, copper or aluminum cable

Weight 8.2 lbs. (3.7 kg)

CAT. NO.	UPC NO.	DESCRIPTION
796	22590	Ratchet Cable Bender
22578	22578	Ratchet Wrench with Grip
22579	22579	L-Wrench with Grip
22682	22682	10" (254 mm) Ratchet Extension
22934	22934	Bending Shoe
30236	30236	Storage Box

Hydraulic Cable Bender



- One-shot bends up to 90°; automatically unloads cable.
- Compact design bends in tight places.
- Unit with foot pump keeps both hands free to hold cable.

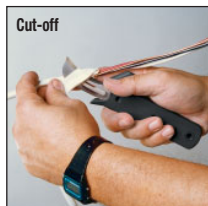
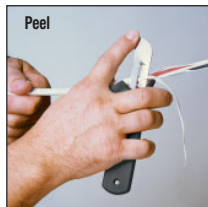
SPECIFICATIONS

Capacity 350 - 1000 kcmil (MCM) (185-500 mm²), 600 volt; 350 - 750 kcmil (MCM) compact cable

Weight 800 - 7 lbs. (3.2 kg), 802 - 26 lbs. (11.8 kg)
800F1725 - 36 lbs. (16.4 kg)

CAT. NO.	UPC NO.	DESCRIPTION
800	23892	Hydraulic Cable Bender only
802	24395	Hydraulic Cable Bender with High Pressure Hose Unit and Storage Box
800F1725	23893	Hydraulic Cable Bender with 1725 Foot Pump, High Pressure Hose Unit and Storage Box
37729	37729	High Pressure Hydraulic Hose 1/4" x 10' (6.4 mm x 3 m)
1725	31353	Hydraulic Foot Pump
23955	23955	Metal Storage Box

Electrician's Knife With Jacket Slicing Side Blade



- Resharpenable main blade for ringing and slicing cable jackets.
- Depth limited side blade for slicing thin jackets without insulation damage or wire nicking.
- Comfortable-to-hold one-piece molded handle.
- Single tool can be used to remove the jacket on most cables commonly installed by electricians, from 14-2 NM to 750 kcmil (MCM) THHN building cable to 16-4 portable cord to 50 pair CM telephone cable.
- For large diameter cables such as 500 kcmil (MCM) THHN, use the main blade to ring the cable and slice the jacket. Then simply peel off the remaining jacket.
- For small cables such as NM-B, NM-D, and UF use the side blade to peel the jacket. Pull back the peeled jacket, and then use the main blade to cut off the excess.

CAT. NO.	UPC NO.	DESCRIPTION
1909	10029	Electrician's Knife

SPECIFICATIONS

Length 7-1/4" (183 mm)

Weight 0.2 lb. (0.1 kg)

Adjustable Cable Stripper



- For mid-span and end termination. Strips TW, THW, THWN, THHN and similar single layer insulation.
- Fast-close jaws and twist. Quick size and insulation adjustments.
- Snap action for same cutting depth time after time.

CAT. NO.	UPC NO.	DESCRIPTION
1905	21533	Adjustable Cable Stripper
21978	21978	Replacement Blade

SPECIFICATIONS

Capacity 1/0 - 1000 kcmil (MCM) (50 - 500 mm² diameter); insulation rated 600 VAC Nominal

Weight .9 lb. (408 g)

Pocket Cable Stripper



- For power and telecommunications cables.
- Capacity: 3/16" - 1 1/8" dia. (4.5 - 29 mm dia.) (#8 AWG-600 kcmil (MCM) THHN)
- 90° blade rotation allows longitudinal, circular, and spiral slitting of insulation.
- Easy blade depth adjustment

CAT. NO.	UPC NO.	DESCRIPTION
1900	45824	Stripping Tool
07915	07915	Replacement Cutting Blade

Pocket Cable Stripper



- For power and telecommunications cables.
- Capacity: 3/4" - 1 1/2" dia. (19-40 mm dia.) (300 kcmil (MCM)-1250 kcmil (MCM) THHN)
- Strips solid conductor, stranded conductor and multiple conductor cables.
- Easy blade depth adjustment.
- Blade rotates for circular, longitudinal and spiral cuts.

CAT. NO.	UPC NO.	DESCRIPTION
1901	45823	Stripping Tool
07915	07915	Replacement Cutting Blade

Kwik Stripper™ Heavy-Duty Wire Stripper



- 18-6 AWG (1.0-4.1mm dia.) stripping capacity.
- Front entry jaws for easy access to boxes, panels and tight spaces.
- Quick and easy adjustments.
- Tough metal alloy construction.

CAT. NO.	UPC NO.	DESCRIPTION
45019	45019	Kwik Stripper™ Heavy-Duty Wire Stripper
45020	45020	Heavy-Duty Replacement Jaws



Kwik Stripper™ Wire Stripper



- 28-10 AWG (.08-6mm²) stripping capacity.
- 12 AWG (4 mm²) solid, 10 AWG (6 mm²) stranded capacity.
- Strips and cuts flat and round cable.
- Self-adjusts to different wire gauges.
- Laminated steel blades minimize the risk of nicking conductors.
- Front entry jaws have an adjustable strip length guide.
- Lightweight reinforced nylon is chemical and corrosion resistant.

CAT. NO.	UPC NO.	DESCRIPTION
45000	45000	Kwik Stripper™ Wire Stripper

The Terminators® Automatic Wire Stripper



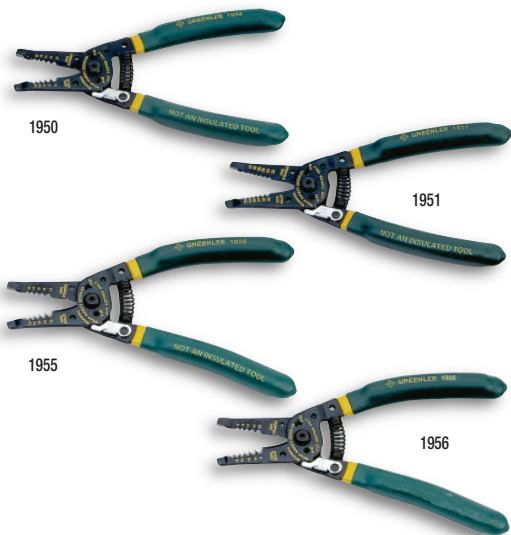
- Production grade wire stripper strips insulation from most smaller gauge wire.
- Strips up to 7/8" (22.2 mm) length.
- Strips PVC and THHN insulation.
- For use with solid and stranded wire.

CAT. NO.	UPC NO.	DESCRIPTION
1935	37600	The Terminators® Automatic Wire Stripper

SPECIFICATIONS

Capacity	20 - 10 AWG (.5 mm ² - 6 mm ²) with PVC or THHN insulation
Weight	.7 lb. (300 g)

Pro Wire Strippers



- Extra long cushioned handles add comfort and reduce hand fatigue. Models 1955 and 1956 feature ergonomically designed, cushioned non-slip handles for superior comfort.
- Pliers nose for working with small nuts and pulling wire.
- Strips both solid and stranded wire.
- Machined stripping stations with a positive stop provide precise stripping diameters.
- Long curved cutter blades reduce force required by 25% and can cut NM in single cut.
- Hole in jaws for looping wires.
- Opening stop prevents spring from disengaging.
- Lock tab protects cutting edges during storage.
- Easy-to-read graphics.
- Cuts screws.

SPECIFICATIONS

Strips	1950 & 1955 – 10-18 AWG solid, 12-20 AWG stranded; 1951 – 22-32 AWG solid, 20-30 AWG stranded 1956 – 8-16 AWG solid, 10-18 AWG stranded
Cuts	#6-32 and #8-32 screws
Length	1950 & 1951 – 7-1/4" (184 mm); 1955 & 1956 – 7-3/8" (187 mm)

CAT. NO.	UPC NO.	DESCRIPTION
1950	06852	Pro Stripper 10-18 AWG
1951	06853	Pro Stripper 22-32 AWG
1955	06857	Pro Plus Stripper 10-18 AWG
1956	10300	Pro Plus Stripper 8-16 AWG

Pro Wire Strippers for NM Cable



- Pliers nose for working with small nuts and pulling wire.
- Machined stripping stations with a positive stop provide precise stripping diameters.
- Long curved cutter blades reduce force required by 25% and can cut NM in single cut.
- Hole in jaws for looping wires.
- Extra long cushioned handles add comfort and reduce hand fatigue.
- Opening stop prevents spring from disengaging.
- Lock tab protects cutting edges during storage.
- Easy-to-read graphics.
- Cuts screws.

CAT. NO.	UPC NO.	DESCRIPTION
1960	06854	Pro Stripper 12/2 & 14/2
1961	06855	Pro Stripper 12/2
1962	06856	Pro Stripper 14/2

SPECIFICATIONS

Removes	NM-B outer jacket
Strips	1960 – #12 and #14 AWG solid; 1961 – #12 AWG solid; 1962 – #14 AWG solid
Cuts	#6-32 and #8-32 screws
Length	1960 – 7-3/4" (197 mm); 1961 & 1962 – 7-1/4" (184 mm)

The Terminators® Wire Stripper/Cutters



All three models feature:

- Stamped from high carbon tool steel with black oxide finish.
- Serrated nose grip for wire pulling and straightening.
- Pivot joints have hardened steel bushings.
- New, softer grip.
- Precision ground blades for consistent stripping and cutting.
- Heat treated for long life.

SPECIFICATIONS

Capacity	PVC or THHN insulation 1916 – 20 - 10 AWG (.5 mm ² - 6 mm ²) 1917 – 26 - 16 AWG (.14 mm ² - 1.5 mm ²) 1918 – 30 - 22 AWG (.05 mm ² - .34 mm ²)
Weight	.2 lb. (91 g) All Models

CAT. NO.	UPC NO.	DESCRIPTION
1916	31891	The Terminators® Wire Stripper/Cutter for use with solid wire
1917	31890	The Terminators® Wire Stripper/Cutter for use with stranded wire
1918	31889	The Terminators® Wire Stripper/Cutter for use with small gauge solid wire

The Terminators® V-Notch Wire Stripper/Cutter



- Stamped from high carbon tool steel with black oxide finish.
- Pivot joints have hardened steel bushings.
- Vinyl cushioned grip.
- Precision ground blades for consistent stripping and cutting.
- Adjustable settings.
- Heat treated for long life.

CAT. NO.	UPC NO.	DESCRIPTION
1913	31894	The Terminators® V-Notch Wire Stripper/Cutter
1914	31893	The Terminators® V-Notch Wire Stripper/Cutter with Spring and Lock Function

SPECIFICATIONS

Capacity	30 - 10 AWG (.25 - 4 mm) with PVC or THHN insulation
Weight	.16 lb. (73 g)



Stripping/Crimping Combination Tool



- Pliers nose avoids having to switch tools for gripping tasks.
- Extra-narrow nose for getting into tight boxes.
- Machined stripping stations with a positive stop provide precise stripping diameters.
- Wire looping holes in jaw.
- Long curved cutter blades reduce force required by 25% and can cut NM in single cut.
- Screw cutting stations are collapsed around the pivot – 20% less force is required.
- Smooth, rounded pivot bolt won't catch in tool pouch or on other tools.
- Easy-to-read graphics.
- Comfortable, cushioned grips.

CAT. NO.	UPC NO.	DESCRIPTION
1927	06851	Stripping/Crimping Combination Tool

SPECIFICATIONS

Strips	10-22 AWG solid and stranded
Crimps	10-22 AWG insulated and non-insulated terminals
Cuts	#4-40, #5-40, #6-32, #8-32, #10-24 and #10-32 screws
Length	8-1/8" (206 mm)

Crimping/Stripping Combination Tool



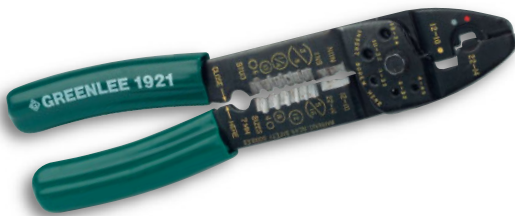
- Up-front cutter for snipping hard-to-reach wires.
- Narrow nose for getting into tight boxes.
- Wire looping holes in jaw.
- Screw cutting stations are collapsed around the pivot – 20% less force is required.
- Machined stripping stations with a positive stop provide precise stripping diameters.
- Long curved cutter blades reduce force required by 25% and can cut NM in single cut.
- Smooth, rounded pivot bolt won't catch in tool pouch or on other tools.
- Easy-to-read graphics.
- Comfortable, cushioned grips.

CAT. NO.	UPC NO.	DESCRIPTION
1923	06850	Crimping/Stripping Combination Tool

SPECIFICATIONS

Strips	8-18 AWG solid, 10-22 AWG stranded
Crimps	10-22 AWG insulated and non-insulated terminals
Cuts	#4-40, #6-32, #8-32, #10-24 and #10-32 screws
Length	8-1/2" (216 mm)

The Terminators® Combination Tool



- Crimp, strip and cut wire with a single tool, also cut and rethread screws.
- Hardened alloy steel with black oxide finish.
- Pivot joints have hardened steel bushings.
- New, softer grips.
- Precision ground blades for fast, easy and consistent wire stripping and cutting.

CAT. NO.	UPC NO.	DESCRIPTION
1921	31888	The Terminators® Combination Tool

SPECIFICATIONS

Capacity	PVC or THHN insulation Cut – 22 - 10 AWG (.34 mm ² - 6 mm ²) Strip – 22 - 10 AWG (.34 mm ² - 6 mm ²) Crimp – insulated and uninsulated, 22 - 10 AWG (.34 mm ² - 6 mm ²) Terminals and Splices; 7 and 8 mm Ignition Terminals Screws – Cut & Rethread, 10-24, 10-32, 8-32, 6-32 and 4-40
Length	8-5/8" (220 mm)
Weight	.5 lb. (225 g)



Kwik Cycle™ Crimping Tool



- For non-insulated terminals.
- Includes ratchet mechanism which releases only after full crimp cycle is completed.

SPECIFICATIONS

Capacity	22 AWG - 6 AWG
Length	12.8" (325 mm)
Weight	.3 lbs. (136 g)

CAT. NO.	UPC NO.	DESCRIPTION
K2-1BGL	02632	Kwik Cycle Crimping Tool

Kwik Cycle™ 9



- Frames are manufactured from heat-treated, hardened tool steel for superior life and function.
- Tools feature a precision full cycle ratchet for accurate, repeatable crimps every cycle.
- Crimping dies are manufactured from hardened, heat-treated tool steel for superior life.
- Tension adjustment preset at the factory for optimum performance.
- Higher leverage force and ergonomically designed handle for improved comfort.
- Ideal for field installation of connectors as well as the shop.
- Die sets are easily interchangeable with a screwdriver.

SPECIFICATIONS

Capacity	Uses Kwik Cycle™ 9 Die Sets
Weight	1.1 lb. (500 g)

CAT. NO.	UPC NO.	DESCRIPTION
45504	45504	9" Crimper frame only



Gator-Plus™ Terminal Crimping Tool



- Totally new hydraulic pump design results in an extremely compact battery-powered crimping tool for crimping terminals and DSV connectors.
- Linear crimping action results in a completely symmetric crimp.
- Special compact 9.6 volt Ni-Cd battery reduces weight and size.
- Slim profile and light weight provide for one hand operation.
- Can complete approximately 150 crimps per battery charge.
- Ram can be retracted in mid-cycle to adjust connector.
- Crimping head rotates 360°.
- Uses all Kwik Cycle 9 Crimping Dies (see below) and on pages 206 and 207.
- Two batteries, battery charger, and carrying case included.
- Choice of 120 volt, 230 volt, or 12 volt battery charger.

SPECIFICATIONS

Capacity	Uses Kwik Cycle 9 Die Sets	Crimping Force	2,900 lb. (13 kN)
Length	13-1/4" (337 mm)	Width	3-1/8" (79 mm)
Weight	2-3/4 lb (1.3 kg)	Crimp Cycle Time	~2 seconds
Battery	9.6 volt 1.3 Ah Ni-Cd battery	Battery Charge Time	1 hour

CAT. NO.	UPC NO.	DESCRIPTION
EK21011	02024	1.5-Ton Battery-Powered Crimping Tool w/120 volt charger
EK21012	02025	1.5-Ton Battery-Powered Crimping Tool w/12 volt charger
EK21022	02026	1.5-Ton Battery-Powered Crimping Tool w/230 volt charger

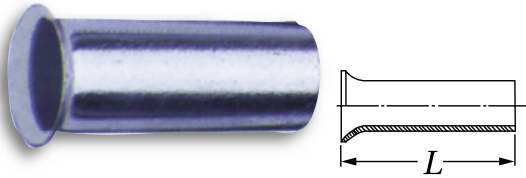
Kwik Cycle™ 9

INTERCHANGEABLE DIE SETS FOR INSULATED AND NON-INSULATED TERMINALS

CAT./UPC NO.	CONNECTION	DESCRIPTION
TOOL W/ DIE 45500 DIE ONLY 45509		22-10 AWG Color coded nests for easy identification Standard insulated terminals, ring tongue, spade lug, slide on and butt splices
TOOL W/ DIE 45501 DIE ONLY 45570		22-10 AWG Color coded nests for easy identification For fully insulated slide on style connectors AMP Ultrafast™ style
DIE ONLY 45565		26-16 AWG For mini insulated terminals with smaller wire barrels Ring tongue, spade, slide on and butt splices
TOOL W/ DIE 45505 DIE ONLY 45507		22-10 AWG For non-insulated terminals and splices



Non-Insulated Wire Ferrules



- For terminating stranded wire into terminal blocks.
- Electrolytic copper and tin plating provide maximum conductivity and low contact resistance.
- Meets DIN 46228, part 1, 0.5 - 50 mm²

SPECIFICATIONS

Material	Copper	Surface	Tin plated
-----------------	--------	----------------	------------

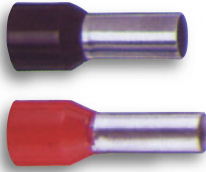
CONDUCTOR SIZE AWG (mm ²)	CATALOG NUMBER	UPC CODE	DIMENSION L INCHES (mm)	RECOMMENDED CRIMPING TOOLS
24 - 23 (0.25)	69 / 5VZ*	04989**	.197 (5)	K1GL, K32GL, K30GL
	69 / 7VZ*	04990	.276 (7)	
22 (0.34)	70 / 5VZ*	04991**	.197 (5)	K1GL, K32GL, K30GL
	70 / 7VZ*	04992	.276 (7)	
20 (0.5)	71S / 6VZ	04993	.236 (6)	K1GL, K32GL, K36GL, K30GL
	71S / 8VZ*	04994	.315 (8)	
	71S / 10VZ	04995	.394 (10)	
18 (0.75)	71 / 6VZ	04996	.236 (6)	K1GL, K32GL, K36GL, K30GL
	71 / 8VZ*	04997	.315 (8)	
	71 / 10VZ	04998	.394 (10)	
	71 / 15VZ*	04999	.591 (15)	
18 - 17 (1)	72S / 6VZ	05000	.236 (6)	K1GL, K32GL, K36GL, K30GL
	72S / 8VZ*	05001	.315 (8)	
	72S / 10VZ	05002	.394 (10)	
	72S / 12VZ*	05003**	.471 (12)	
	72S / 15VZ*	05004**	.591 (15)	
16 (1.5)	72 / 7VZ	05005	.276 (7)	K1GL, K32GL, K36GL, K30GL
	72 / 10VZ	05006	.394 (10)	
	72 / 12VZ	05007	.471 (12)	
	72 / 15VZ*	05008	.591 (15)	
	72 / 18VZ	05009**	.709 (18)	
	72 / 20VZ*	05010**	.787 (20)	
14 (2.5)	73 / 7VZ	05011	.276 (7)	K1GL, K32GL, K36GL, K30GL
	73 / 10VZ	05012	.394 (10)	
	73 / 12VZ	05013	.471 (12)	
	73 / 15VZ*	05014	.591 (15)	
	73 / 18VZ	05015**	.709 (18)	
12 (4)	74 / 9VZ	05016	.354 (9)	K32GL, K36GL, K30GL
	74 / 12VZ	05017	.471 (12)	
	74 / 15VZ	05018	.591 (15)	
	74 / 18VZ	05019	.709 (18)	
	74 / 20VZ*	05020**	.787 (20)	
10 (6)	75 / 10VZ	05021	.394 (10)	K32GL, K34GL, K36GL, K30GL
	75 / 12VZ	05022	.471 (12)	
	75 / 15VZ	05023	.591 (15)	
	75 / 18VZ	05024	.709 (18)	
	75 / 20VZ*	05025	.787 (20)	
	75 / 25VZ*	05026**	.984 (25)	
8 (10)	76 / 12VZ	05027	.471 (12)	K28GL, K34GL
	76 / 15VZ	05028	.591 (15)	
	76 / 18VZ	05029	.709 (18)	
	76 / 20VZ*	05030	.787 (20)	
	76 / 25VZ*	05031**	.984 (25)	

CONDUCTOR SIZE AWG (mm ²)	CATALOG NUMBER	UPC CODE	DIMENSION L INCHES (mm)	RECOMMENDED CRIMPING TOOLS
6 (16)	77 / 12VZ	05032	.471 (12)	K28GL, K34GL
	77 / 15VZ	05033	.591 (15)	
	77 / 18VZ	05034	.709 (18)	
	77 / 20VZ*	05035	.787 (20)	
	77 / 25VZ	05036**	.984 (25)	
	77 / 32VZ	05037**	1.260 (32)	
4 (25)	78 / 12VZ*	05038	.471 (12)	K28GL
	78 / 15VZ	05039	.591 (15)	
	78 / 20VZ*	05041	.787 (20)	
	78 / 25VZ	05042	.984 (25)	
	78 / 28VZ*	05043**	1.102 (28)	
2 (35)	79 / 15VZ*	05044	.591 (15)	K28GL
	79 / 18VZ	05045	.709 (18)	
	79 / 22VZ*	05046	.866 (22)	
	79 / 25VZ	05047**	.984 (25)	
	79 / 30VZ*	05048**	1.181 (30)	
1/0 (50)	80 / 18VZ	05049	.709 (18)	K28GL, K29GL
	80 / 22VZ*	05050	.866 (22)	
	80 / 25VZ	05051	.984 (25)	
	80 / 30VZ*	05052	1.181 (30)	
2/0 (70)	81 / 22VZ	05053	.866 (22)	K29GL
	81 / 25VZ	05054	.984 (25)	
	81 / 30VZ	05055	1.181 (30)	
3/0 (95)	82 / 25VZ	05056	.984 (25)	K29GL
	82 / 30VZ	05057	1.181 (30)	
	82 / 32VZ	05058	1.260 (32)	
	82 / 34VZ	05059**	1.339 (34)	
4/0 (120)	83 / 30VZ	05060	1.181 (30)	22 Series Tool with AE 22/120 dies
	83 / 32VZ	05061	1.260 (32)	
	83 / 34VZ	05062**	1.339 (34)	
	83 / 38VZ	05063**	1.496 (38)	
	83 / 40VZ	05064**	1.575 (40)	
300 KCMIL (150)	84 / 32VZ	05065	1.260 (32)	22 Series Tool with AE 22/150 dies
	84 / 34VZ	05066**	1.339 (34)	
	84 / 38VZ	05067**	1.496 (38)	
	84 / 40VZ	05068**	1.575 (40)	
350 KCMIL (185)	85 / 32VZ	05069**	1.260 (32)	22 Series Tool with AE 22/185 dies
	85 / 40VZ	05070	1.575 (40)	

*No applicable standard.
**Special order.
See pages 188, 189 for recommended ferrule crimping tools.



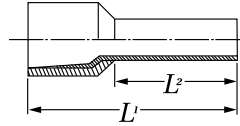
Insulated Wire Ferrules



- Terminate stranded wire into terminal blocks.
- Electrolytic copper and tin plating provide maximum conductivity and low contact resistance.

SPECIFICATIONS

Material	Copper	Surface	Tin plated	Insulated	Polypropylene plastic
----------	--------	---------	------------	-----------	-----------------------



COLOR CODE: OLD DIN STANDARD

CONDUCTOR SIZE AWG (mm²)	CATALOG NUMBER	UPC NUMBER	COLOR	DIMENSIONS INCHES (mm)		RECOMMENDED CRIMPING TOOLS
				L1	L2	
26 (0.14)	166 / GR	04835	Gray	.409 (10.4)	.236 (6)	K1GL, K32GL,
	166 / GRL	04836		.488 (12.4)	.315 (8)	
24 (0.25)	167 / H	04837	Light Blue	.409 (10.4)	.236 (6)	K1GL, K32GL, K30GL
	167 / HL	04838		.488 (12.4)	.315 (8)	
22 (0.34)	168 / T	04839	Turquoise	.409 (10.4)	.236 (6)	K1GL, K32GL, K30GL
	168 / TL	04840		.488 (12.4)	.315 (8)	
20 (0.5)	169 / OK	04841	Orange	.471 (12)	.236 (6)	K1GL, K32GL, K36GL, K30GL
	169 / O	04842		.551 (14)	.315 (8)	
	169 / OH	04843		.630 (16)	.394 (10)	
18 (0.75)	170 / WK	04844	White	.488 (12.4)	.236 (6)	K1GL, K32GL, K36GL, K30GL
	170 / W	04845		.574 (14.6)	.315 (8)	
	170 / WH	04846		.645 (16.4)	.394 (10)	
	170 / WL	04847		.724 (18.4)	.471 (12)	
18 - 17 (1)	171 / GK	04848	Yellow	.488 (12.4)	.236 (6)	K1GL, K32GL, K36GL, K30GL
	171 / G	04849		.574 (14.6)	.315 (8)	
	171 / GH	04850		.645 (16.4)	.394 (10)	
	171 / GL	04851*		.724 (18.4)	.471 (12)	
16 (1.5)	172 / RO	04852	Red	.574 (14.6)	.315 (8)	K1GL, K32GL, K36GL, K30GL
	172 / RH	04853		.645 (16.4)	.394 (10)	
	172 / RL	04854		.960 (24.4)	.709 (18)	
14 (2.5)	173 / B	04855	Blue	.598 (15.2)	.315 (8)	K1GL, K32GL, K36GL, K30GL
	173 / BH	04856		.748 (19)	.471 (12)	
	173 / BL	04857		.984 (25)	.709 (18)	
12 (4)	174 / GR	04858	Gray	.649 (16.5)	.394 (10)	K32GL, K36GL, K30GL
	174 / GRH	04859		.767 (19.5)	.471 (12)	
	174 / GRL	04860		1.003 (25.5)	.709 (18)	
10 (6)	175 / S	04861	Black	.787 (20)	.471 (12)	K32GL, K34GL, K36GL, K30GL
	175 / SL	04862		1.024 (26)	.709 (18)	
8 (10)	176 / E	04863	Ivory	.846 (21.5)	.471 (12)	K28GL, K34GL
	176 / EL	04864		1.082 (27.5)	.709 (18)	
6 (16)	177 / GR	04865	Green	.870 (22.2)	.471 (12)	K28GL, K34GL
	177 / GRL	04866		1.110 (28.2)	.709 (18)	
4 (25)	178 / BR	04867	Brown	1.181 (30)	.630 (16)	K28GL
	178 / BRL	04868*		1.377 (35)	.866 (22)	
2 (35)	179 / B	04869	Beige	1.181 (30)	.630 (16)	K28GL
	179 / BL	04870*		1.535 (39)	.984 (25)	
1/0 (50)	180 / O	04871*	Olive	1.433 (36.4)	.787 (20)	K28GL, K29GL

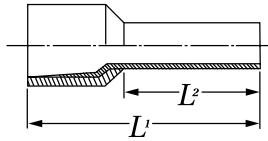
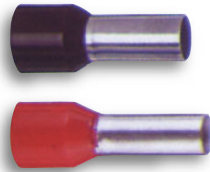
COLOR CODE: DIN 46228, PART 4

CONDUCTOR SIZE AWG (mm²)	CATALOG NUMBER	UPC NUMBER	COLOR	DIMENSIONS INCHES (mm)		RECOMMENDED CRIMPING TOOLS
				L1	L2	
20 (0.5)	469 / 6	04548	White	.471 (12)	.236 (6)	K1GL, K32GL, K36GL, K30GL
	469 / 8	04549		.551 (14)	.315 (8)	
	469 / 10	04550		.630 (16)	.394 (10)	
18 (0.75)	470 / 6	04551	Gray	.471 (12)	.236 (6)	K1GL, K32GL, K36GL, K30GL
	470 / 8	04552		.551 (14)	.315 (8)	
	470 / 10	04553		.630 (16)	.394 (10)	
	470 / 12	04554		.709 (18)	.471 (12)	
18 - 17 (1)	471 / 6	04555	Red	.471 (12)	.236 (6)	K1GL, K32GL, K36GL, K30GL
	471 / 8	04556		.551 (14)	.315 (8)	
	471 / 10	04557		.630 (16)	.394 (10)	
	471 / 12	04558		.709 (18)	.471 (12)	
16 (1.5)	472 / 8	04559	Black	.551 (14)	.315 (8)	K1GL, K32GL, K36GL, K30GL
	472 / 10	04560		.630 (16)	.394 (10)	
	472 / 12	04561		.709 (18)	.471 (12)	
	472 / 18	04562		.945 (24)	.709 (18)	
14 (2.5)	473 / 8	04563	Blue	.551 (14)	.315 (8)	K1GL, K32GL, K36GL, K30GL
	473 / 12	04564		.709 (18)	.471 (12)	
	473 / 18	04565		.945 (24)	.709 (18)	
12 (4)	474 / 10	04566	Gray	.699 (17)	.394 (10)	K32GL, K36GL, K30GL
	474 / 12	04567		.787 (20)	.471 (12)	
	474 / 18	04568*		1.024 (26)	.709 (18)	
10 (6)	475 / 12	04569	Yellow	.787 (20)	.471 (12)	K32GL, K34GL, K36GL, K30GL
	475 / 18	04570		1.024 (26)	.709 (18)	
8 (10)	476 / 12	04571	Red	.866 (22)	.471 (12)	K28GL, K34GL
	476 / 18	04572		1.102 (28)	.709 (18)	
6 (16)	477 / 12	04573	Blue	.945 (24)	.471 (12)	K28GL, K34GL
	477 / 18	04574		1.102 (28)	.709 (18)	
4 (25)	478 / 16	04575	Yellow	1.181 (30)	.630 (16)	K28GL
	478 / 18	04576		1.181 (30)	.709 (18)	
	478 / 22	04577		1.417 (36)	.866 (22)	
2 (35)	479 / 16	04578*	Red	1.181 (30)	.630 (16)	K28GL
	479 / 18	04579*		1.181 (30)	.709 (18)	
	479 / 25	04580*		1.535 (39)	.984 (25)	
1/0 (50)	480 / 20	04581	Blue	1.417 (36)	.787 (20)	K28GL, K29GL
	480 / 25	04582*		1.575 (40)	.984 (25)	

*Special order. See pages 188, 189 for recommended ferrule crimping tools.



Insulated Wire Ferrules



- Terminate stranded wire into terminal blocks.
- Electrolytic copper and tin plating provide maximum conductivity and low contact resistance.

SPECIFICATIONS

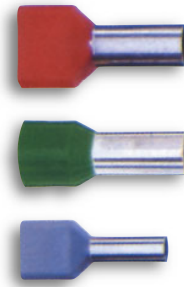
Material	Copper
Surface	Tin plated
Insulation	Polypropylene plastic

COLOR CODE: FRENCH STANDARD.

CONDUCTOR SIZE AWG (mm ²)	CATALOG NUMBER	UPC NUMBER	COLOR	DIMENSIONS INCHES (mm)		RECOMMENDED CRIMPING TOOLS
				L1	L2	
26 (0.14)	166 / 6 166 / 8	02971 02972	Brown	.409 (10,4) .488 (12,4)	.236 (6) .315 (8)	K1GL, K32GL
24 (0.25)	167 / 6 167 / 8	02973 02974	Light Yellow	.433 (11) .511 (13)	.236 (6) .315 (8)	K1GL, K32GL, K30GL
22 (0.34)	168 / 6 168 / 8	02975 02976	Light Green	.433 (11) .511 (13)	.236 (6) .315 (8)	K1GL, K32GL, K30GL
20 (0.5)	169 / 6 169 / 8	02977 02978	White	.433 (11) .511 (13)	.236 (6) .315 (8)	K1GL, K32GL, K30GL
18 (0.75)	170 / 6 170 / 8	02979 02980	Blue	.452 (11.5) .531 (13.5)	.236 (6) .315 (8)	K1GL, K32GL, K36GL, K30GL
18 - 17 (1)	171 / 6 171 / 8	02981 02982	Red	.452 (11.5) .531 (13.5)	.236 (6) .315 (8)	K1GL, K32GL, K36GL
16 (1.5)	172 / 6 172 / 8 172 / 18	02983 02984 02985*	Black	.452 (11.5) .531 (13.5) .897 (22.8)	.236 (6) .315 (8) .688 (17.5)	K1GL, K32GL, K36GL, K30GL
14 (2.5)	173 / 8 173 / 18	02986 02987	Gray	.570 (14.5) .945 (24)	.315 (8) .688 (17.5)	K1GL, K32GL, K36GL, K30GL
12 (4)	174 / 12 174 / 18	02988 02989	Orange	.681 (17.3) 1.003 (25.5)	.452 (11.5) .688 (17.5)	K32GL, K36GL, K30GL
10 (6)	175 / 12 175 / 18	02990 02991	Green	.787 (20) 1.024 (26)	.452 (11.5) .688 (17.5)	K32GL, K34GL, K36GL, K30GL
8 (10)	176 / 12 176 / 18	02992 02993	Brown	.843 (21.5) 1.062 (27)	.471 (12) .688 (17.5)	K28GL, K34GL,
6 (16)	177 / 12 177 / 18	02994 02995*	Ivory	.925 (23.5) 1.141 (29)	.471 (12) .688 (17.5)	K28GL, K34GL
4 (25)	178 / 18	02996	Black	1.181 (30)	.688 (17.5)	K28GL

*Special order.
See pages 188, 189 for recommended ferrule crimping tools.

Insulated Twin Wire Ferrules



- Use to compress two separate conductors together in one ferrule to make chain bridges easy to install.
- Electrolytic copper and tin plating provide maximum conductivity and low contact resistance.

SPECIFICATIONS

Material	Copper
Surface	Tin plated
Insulation	Polypropylene plastic

CONDUCTOR SIZE AWG (mm ²)	CATALOG NUMBER	UPC NUMBER	COLOR	DIMENSIONS INCHES (mm)		RECOMMENDED CRIMPING TOOLS
				L1	L2	
2 x 20 (2 x 0.5)	869 / 8	02954	White	.591 (15)	.315 (8)	K32GL, K36GL, K30GL
2 x 18 (2 x 0.75)	870 / 8 870 / 10	02955 02956	Gray	.591 (15) .669 (17)	.315 (8) .394 (10)	K32GL, K36GL, K30GL
2 x 17 (2 x 1)	871 / 8 871 / 10	02957 02958	Red	.591 (15) .669 (17)	.315 (8) .394 (10)	K32GL, K36GL, K30GL
2 x 15 (2 x 1.5)	872 / 8 872 / 12	02959 02960	Black	.630 (16) .787 (20)	.315 (8) .471 (12)	K32GL, K36GL, K30GL
2 x 13 (2 x 2.5)	873 / 10 873 / 13	02961 02962	Blue	.728 (18.5) .846 (21.5)	.394 (10) .512 (13)	K32GL, K36GL, K30GL
2 x 11 (2 x 4)	874 / 12	02963	Gray	.906 (23)	.471 (12)	K28GL, K34GL, K36GL
2 x 10 (2 x 6)	875 / 14	02964	Yellow	1.024 (26)	.551 (14)	K28GL, K34GL,
2 x 7 (2 x 10)	876 / 14	02965*	Red	1.024 (26)	.551 (14)	K28GL
2 x 5 (2 x 16)	877 / 14	02966*	Blue	1.181 (30)	.551 (14)	K28GL

*Special order.
See pages 188, 189 for recommended ferrule crimping tools.



Wire Ferrule Crimping Tool 26 – 13 AWG



- Makes trapezoidal crimps.
- Includes cutter and replaceable stripper blade set.

CAT. NO.	UPC NO.	DESCRIPTION
K1GL	02633	Wire Ferrule Crimper

SPECIFICATIONS

Range	26 - 13 AWG (.14 - 2.5 mm ²)
Length	6.9" (175 mm)
Weight	.4 lbs. (0.2 kg)

Wire Ferrule Crimping Tool 20 – 13 AWG



- Crimps single and twin cable wire ferrules.
- End loading type tool that makes trapezoidal crimps.

SPECIFICATIONS

Range	Single cable wire ferrules: 20 - 13 AWG (.5 - 2.5 mm ²)
	Twin wire ferrules: 2 x 20 - 2 x 15 AWG (2 x .5 - 2 x 1.5 mm ²)
Length	7.90" (200 mm)
Weight	.5 lbs. (0.2 kg)

CAT. NO.	UPC NO.	DESCRIPTION
K36GL	02639	Wire Ferrule Crimper

Wire Ferrule Crimping Tool 26 – 10 AWG



- Makes trapezoidal crimps with full cycle ratchet mechanism to assure complete crimps.
- Crimps single and twin cable wire ferrules.
- Adjusts automatically to correct crimp size.

SPECIFICATIONS

Range	Single cable wire ferrules: 26 - 10 AWG (.14 - 6 mm ²)
	Twin wire ferrules: 2 x 20 - 2 x 13 AWG (2 x .5 - 2 x 2.5 mm ²)
Length	8.4" (213 mm)
Weight	1.1 lbs. (.4 kg)

CAT. NO.	UPC NO.	DESCRIPTION
K32GL	02637	Wire Ferrule Crimper

Wire Ferrule Crimping Tool 10 – 6 AWG



- Makes trapezoidal crimp with full cycle ratchet mechanism to assure complete crimps.
- Crimps single and twin cable wire ferrules.
- Adjusts automatically to correct crimp size.

SPECIFICATIONS

Range	Single cable wire ferrules: 10 - 6 AWG (6 - 16 mm ²)
	Twin wire ferrules: 2 x 11 - 2 x 10 AWG (2 x 4 - 2 x 6 mm ²)
Length	8.9" (225 mm)
Weight	1.1 lbs. (0.4 kg)

CAT. NO.	UPC NO.	DESCRIPTION
K34GL	02638	Wire Ferrule Crimper



Wire Ferrule Crimping Tool 25 – 10 AWG



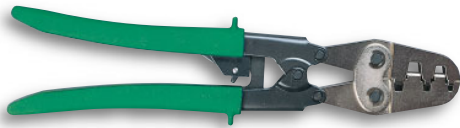
- Makes square shaped crimps.
- Full cycle ratchet mechanism assures complete crimps.
- Adjusts automatically to correct crimp size.

CAT. NO.	UPC NO.	DESCRIPTION
K30GL	02636	Wire Ferrule Crimper

SPECIFICATIONS

Range	25 - 10 AWG (0.14 - 6 mm ²)
Length	6.9" (175 mm)
Weight	1.1 lbs. (0.4 kg)

Wire Ferrule Crimping Tool 7 – 1/0 AWG



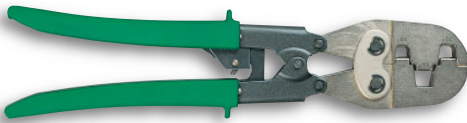
- Makes trapezoidal crimps with full cycle ratchet mechanism to assure complete crimps.
- Crimps single and twin cable wire ferrules.

SPECIFICATIONS

Range	Single cable wire ferrules: 7 - 1/0 AWG (10 - 50 mm ²)
	Twin wire ferrules: 2 x 11 - 2 x 5 AWG (2 x 4 - 2 x 16 mm ²)
Length	13.2" (335 mm)
Weight	1.8 lbs. (0.8 kg)

CAT. NO.	UPC NO.	DESCRIPTION
K28GL	02634	Wire Ferrule Crimper

Wire Ferrule Crimping Tool 1/0 – 3/0 AWG



- Makes trapezoidal crimps with full cycle ratchet mechanism to assure complete crimps.

SPECIFICATIONS

Range	1/0 - 3/0 AWG (50 - 90 mm ²)
Length	13.2" (335 mm)
Weight	1.8 lbs. (0.8 kg)

CAT. NO.	UPC NO.	DESCRIPTION
K29GL	02635	Wire Ferrule Crimper



GREENLEE

USA Tel: 800-435-0786
Fax: 800-451-2632

Canada Tel: 800-435-0786
Fax: 800-524-2853

International Tel: +1-815-397-7070
Fax: +1-815-397-9247

greenlee.com

Notes
